

**CRSV10 and CRSV20 Series Pumps**

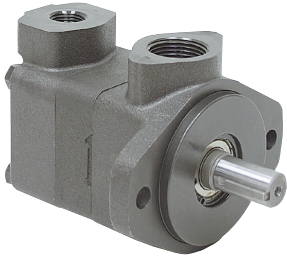


• Brand new, CRS hydraulic balanced vane pumps. Cast iron construction. Ports inline with one another. Operating rotation can be field reversed. Outlet port can be field rotated any position.

**SPECIFICATIONS For All CRSV Series**

- Min. 600 RPM
- Input rotation CW
- Mount SAE A 2 bolt

**CRSV10 Series**



**SPECIFICATIONS For CRSV10 Series**

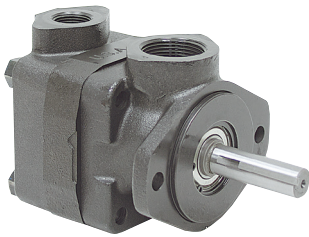
- Inlet port 1" NPT
- Outlet port 1/2" NPT
- Shaft 3/4" dia. x 1 1/4" w/ 3/16" key
- Shpg. 15 lbs.

at Max. RPM & PSI									
ITEM	Model	Displ.	Max. RPM	PSI	GPM	HP	Size		Price
9-8532-1	CRS V10-1P1P-1C20	0.20	4800	2500	3.6	7	4 7/8" x 5 1/4" x 4 1/4"		\$269.60
9-8532-2	CRS V10-1P2P-1C20	0.40	4500	2500	7.3	13.6	4 7/8" x 5 1/4" x 4 1/4"		\$269.60
9-8532-3	CRS V10-1P3P-1C20	0.60	4000	2500	9.4	17.8	4 7/8" x 5 1/4" x 4 1/4"		\$269.60
9-8532-4	CRS V10-1P4P-1C20	0.80	3400	2500	10.9	20.4	5 1/16" x 5 1/4" x 4 1/4"		\$269.60
9-8532-5	CRS V10-1P5P-1C20	1.0	3200	2500	12.8	22.8	5 1/16" x 5 1/4" x 4 1/4"		\$269.60
9-8532-6	CRS V10-1P6P-1C20	1.19	3000	2200	14.6	24.5	5 1/4" x 5 1/4" x 4 1/4"		\$269.60
9-8532-7	CRS V10-1P7P-1C20	1.39	2800	2000	16	17.9	5 1/4" x 5 1/4" x 4 1/4"		\$269.60

**SPECIFICATIONS For CRSV20 Series**

- Inlet port 1 1/4" NPT
- Outlet port 3/4" NPT
- Shaft 3/4" dia. x 2.655" w/ 3/16" key
- Shpg. 19 lbs.

**CRSV20 Series**



at Max. RPM & PSI									
ITEM	Model	Displ.	Max. RPM	PSI	GPM	HP	Size		Price
9-8533-5	CRS V20-1P5P-1C11	1.0	3400	2500	13.5	24.5	5 3/16" x 5 1/4" x 5 1/16"		\$297.00
9-8533-6	CRS V20-1P6P-1C11	1.19	3400	2500	16.1	29	5 3/16" x 5 1/4" x 5 1/16"		\$297.00
9-8533-7	CRS V20-1P7P-1C11	1.39	3000	2500	16.7	29.5	5 7/16" x 5 1/4" x 5 1/16"		\$297.00
9-8533-8	CRS V20-1P8P-1C11	1.62	2800	2500	17.7	32.5	5 7/16" x 5 1/4" x 5 1/16"		\$297.00
9-8533-9	CRS V20-1P9P-1C11	1.81	2800	2500	19.8	35.5	5 7/16" x 5 1/4" x 5 1/16"		\$297.00
9-8533-10	CRS V20-1P10P-1C11	2.00	2500	2500	20.6	33.8	5 11/16" x 5 1/4" x 5 1/16"		\$297.00
9-8533-11	CRS V20-1P11P-1C11	2.22	2500	2500	22.9	37.5	5 11/16" x 5 1/4" x 5 1/16"		\$297.00
9-8533-12	CRS V20-1P12P-1C11	2.38	2400	2200	23	36	5 11/16" x 5 1/4" x 5 1/16"		\$297.00
9-8533-13	CRS V20-1P13P-1C11	2.59	2400	2200	25.9	39	5 11/16" x 5 1/4" x 5 1/16"		\$297.00

**TB and TC Series Pumps**

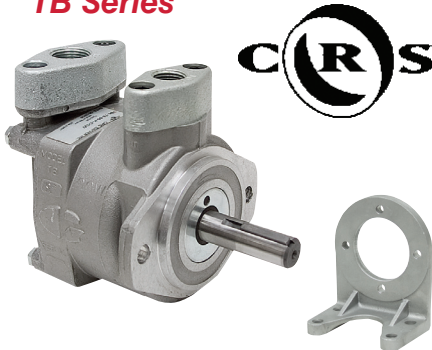


• Brand new. Designed specifically for heavy duty industrial, agricultural and contractor applications. "No load" starting. Vanes are retracted until centrifugal force automatically extends them. Until they become extended no load is exerted on the engine. Ball bearings give maximum shaft support with minimum friction. Pump can be belt and pulley driven.

**SPECIFICATIONS for All TB and TC Series**

- Max. 1500 PSI
- Min. 300 RPM
- Req'd starting 500 RPM

**TB Series**



**SPECIFICATIONS For TB Series**

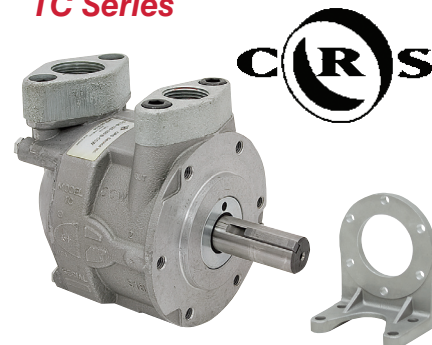
- Max. RPM 1800
- Shaft 3/4" dia. x 2 1/2" w/ 3/16" keyway
- Two bolt A mount
- Size 7 3/4" x 5 1/4" x 5 1/4"
- Shpg. 13 lbs.

CW Rotation		CCW Rotation		at 1500 PSI			Ports		Price
ITEM	ITEM	Model	Displ.	GPM	HP	IN	OUT		
9-1214-CW	9-1214-CCW	TB-3	0.374	3.80	6.45	3/4" NPT	1/2" NPT	\$558.00	
9-1215-CW	9-1215-CCW	TB-6	1.06	9.06	11	3/4" NPT	1/2" NPT	\$558.00	
9-1216-CW	9-1216-CCW	TB-9	1.72	14.35	15.81	1" NPT	3/4" NPT	\$558.00	
932-CW	932-CCW	TB-12	2.05	17.10	19.35	1" NPT	3/4" NPT	\$558.00	

**TB Series Foot Mount**

- ITEM 933
- Size 3 3/4" x 5 3/8" x 6 1/2"
- Shpg. 1 1/2 lbs.
- \$54.05**

**TC Series**



**SPECIFICATIONS For TC Series**

- Max. RPM 1800
- Shaft 1" dia. x 2 1/2" w/ 1/4" keyway
- 6 hole flange mount
- Size 8 3/4" x 6 1/2" x 5 1/2"
- Shpg. 17 lbs.

CW Rotation		CCW Rotation		at 1500 PSI			Ports		Price
ITEM	ITEM	Model	Displ.	GPM	HP	IN	OUT		
9-4102-CW	9-4102-CCW	TC-16	3.18	24.80	22.18	1 1/4" NPT	1" NPT	\$642.00	
990-CW	990-CCW	TC-20	3.90	31.00	29.70	1 1/4" NPT	1" NPT	\$642.00	
9-1217-CW *	9-1217-CCW *	TC-24	4.93	32.55	30.75	1 1/4" NPT	1" NPT	\$642.00	

\* Max. RPM 1500

**TC Series Foot Mount**

- ITEM 990-A
- Size 3 3/4" x 5 3/8" x 6 1/2"
- Shpg. 1 1/2 lbs.
- \$51.25**