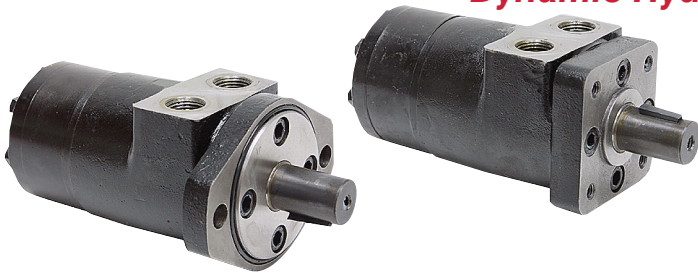


## Dynamic Hydraulic Motors

**DYNAMIC**  
 FLUID COMPONENTS, INC.


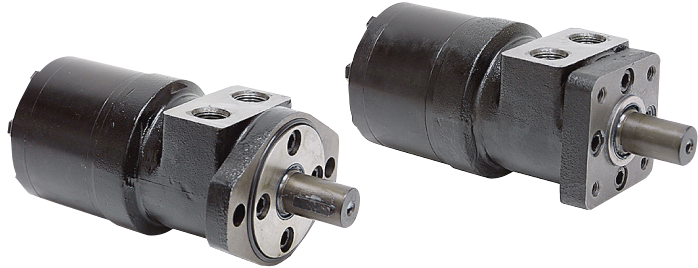
## BMPH Series

- Brand new DYNAMIC BMPH series hydraulic motors. Gerotor power element. Interchangeable with the following motor lines: Char-Lynn H, Danfoss DH, White RS, Parker/Ross MG/TB.

**SPECIFICATIONS FOR BMPH SERIES**

- Reversible rotation
- Shaft 1" x 1.57" diam. 1/4" woodruff key tapped 1/4-20
- Ports 1/2" NPT
- SAE 4 case drain

2 Bolt ITEM	4 Bolt ITEM	Displ.	PSI		Torque in. lbs.		RPM		GPM		Size	Shpg.	Price
			Cont.	Int.	Cont.	Int.	Cont.	Int.	Cont.	Int.			
9-7077-36	9-7076-36	2.2	1813	2393	487	673	1500	1650	14.5	15.8	5 1/2" x 3 1/4" x 3 1/4"	15 lbs.	<b>\$192.55</b>
9-7077-50	9-7076-50	3.15	2031	2538	885	1133	1150	1450	15.8	19.8	5 9/16" x 3 1/4" x 3 1/4"	16 lbs.	<b>\$192.55</b>
9-7077-80	9-7076-80	4.74	2031	2538	1292	1646	770	960	15.8	19.8	5 5/8" x 3 1/4" x 3 1/4"	17 lbs.	<b>\$197.15</b>
9-7077-100	9-7076-100	5.87	2031	2538	1611	2009	615	770	15.8	19.8	5 3/4" x 3 1/4" x 3 1/4"	17 lbs.	<b>\$198.45</b>
9-7077-125	9-7076-125	7.20	2031	2538	2089	2567	490	615	15.8	19.8	5 15/16" x 3 1/4" x 3 1/4"	17 lbs.	<b>\$206.00</b>
9-7077-160	9-7076-160	9.51	2031	2538	2673	3275	383	475	15.8	19.8	6 1/8" x 3 1/4" x 3 1/4"	18 lbs.	<b>\$212.25</b>
9-7077-200	9-7076-200	11.59	2031	2538	3186	3894	310	385	15.8	19.8	6 5/16" x 3 1/4" x 3 1/4"	18 lbs.	<b>\$219.80</b>
9-7077-250	9-7076-250	14.66	2031	2538	4071	5045	250	310	15.8	19.8	6 9/16" x 3 1/4" x 3 1/4"	19 lbs.	<b>\$226.15</b>
9-7077-315	9-7076-315	19.03	1813	2031	4204	4912	192	240	15.8	19.8	7 3/4" x 3 1/4" x 3 1/4"	19 lbs.	<b>\$231.15</b>
9-7077-400	9-7076-400	23.61	1450	1813	4337	5133	155	190	15.8	19.8	7 3/8" x 3 1/4" x 3 1/4"	20 lbs.	<b>\$237.45</b>



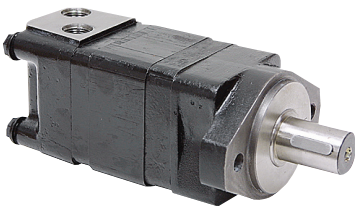
## BMRS Series

- Brand new DYNAMIC BMRS series hydraulic motors. Gerotor power element. Interchangeable with the following motor lines: Char-Lynn S, Danfoss DS, White RS, Parker/Ross MG/TB.

**SPECIFICATIONS FOR BMRS SERIES**

- Reversible rotation
- Shaft 1" x 1.57" diam. 1/4" woodruff key tapped 1/4-20
- Ports SAE 10
- SAE 4 case drain

2 Bolt ITEM	4 Bolt ITEM	Displ.	PSI		Torque in. lbs.		RPM		GPM		Size	Shpg.	Price
			Cont.	Int.	Cont.	Int.	Cont.	Int.	Cont.	Int.			
9-7079-50	9-7078-50	3.15	2031	2538	885	1115	960	1150	13.2	15.8	5 11/16" x 3 1/4" x 3 3/4"	18 lbs.	<b>\$237.45</b>
9-7079-80	9-7078-80	4.97	2321	2900	1726	1947	750	940	15.8	19.8	5 15/16" x 3 1/4" x 3 3/4"	19 lbs.	<b>\$247.10</b>
9-7079-100	9-7078-100	6.22	2321	2900	2124	2478	600	750	15.8	19.8	6 1/16" x 3 1/4" x 3 3/4"	19 lbs.	<b>\$251.30</b>
9-7079-125	9-7078-125	7.76	2321	2900	2655	3009	475	600	15.8	19.8	6 1/4" x 3 1/4" x 3 3/4"	19 lbs.	<b>\$255.90</b>
9-7079-160	9-7078-160	9.59	2321	2900	3186	3805	378	475	18.8	19.8	6 5/8" x 3 1/4" x 3 3/4"	20 lbs.	<b>\$263.45</b>
9-7079-200	9-7078-200	11.87	2321	2900	3186	3894	310	385	15.8	19.8	6 7/8" x 3 1/4" x 3 3/4"	21 lbs.	<b>\$272.25</b>
9-7079-250	9-7078-250	15.46	2321	2900	3451	4336	240	300	15.8	19.8	7 1/4" x 3 1/4" x 3 3/4"	22 lbs.	<b>\$281.05</b>
9-7079-315	9-7078-315	19.36	2031	2538	3451	4735	190	240	15.8	19.8	7 3/4" x 3 1/4" x 3 3/4"	23 lbs.	<b>\$286.10</b>
9-7079-375	9-7078-375	23.27	1450	2031	3230	4381	155	190	15.8	19.8	8 3/16" x 3 1/4" x 3 3/4"	24 lbs.	<b>\$297.45</b>



## BMSY Series

- Brand new DYNAMIC BMSY series hydraulic motors. Gerotor power element. Tapered roller bearings on output shaft for high axial and radial load capacity. Interchangeable with the following motor lines: Char-Lynn 2000, Danfoss OMS/OMSS, White RE/DH, Parker/Ross MB/TF.

**SPECIFICATIONS FOR BMS SERIES**

- Reversible rotation
- Mount 2 bolt SAE A
- Woodruff keyed shafts in sizes shown
- Ports SAE 10
- SAE 4 case drain

1" x 1.64" Shaft ITEM	1 1/4" x 1.89" Shaft ITEM	Displ.	PSI		Torque in. lbs.		RPM		GPM		Size	Shpg.	Price
			Cont.	Int.	Cont.	Int.	Cont.	Int.	Cont.	Int.			
9-7080-80	9-7081-80	4.92	2973	3265	1991	2212	800	988	17.1	21.1	6 5/8" x 5 9/16" x 4 1/16"	26 lbs.	<b>\$371.70</b>
9-7080-100	9-7081-100	6.15	2973	3265	2566	2832	748	900	19.8	23.7	6 3/4" x 5 9/16" x 4 1/16"	26 lbs.	<b>\$375.90</b>
9-7080-125	9-7081-125	7.63	2973	3265	3230	3540	600	720	19.8	23.7	7" x 5 9/16" x 4 1/16"	27 lbs.	<b>\$379.65</b>
9-7080-160	9-7081-160	9.39	3045	3265	4292	4778	470	560	19.8	23.7	7 1/4" x 5 9/16" x 4 1/16"	28 lbs.	<b>\$383.85</b>
9-7080-200	9-7081-200	11.8	3045	3265	5185	5707	375	450	19.8	23.7	7 9/16" x 5 9/16" x 4 1/16"	29 lbs.	<b>\$387.65</b>
9-7080-250	9-7081-250	14.8	2900	3265	6265	7142	300	360	19.8	23.7	8" x 5 9/16" x 4 1/16"	31 lbs.	<b>\$403.15</b>
9-7080-315	9-7081-315	18.9	2900	3265	7787	8495	240	280	19.8	23.7	8 7/16" x 5 9/16" x 4 1/16"	31 lbs.	<b>\$435.05</b>
9-7080-375	9-7081-375	24.0	2320	2563	7786	8495	185	225	19.8	23.7	8 15/16" x 5 9/16" x 4 1/16"	32 lbs.	<b>\$466.95</b>
9-7080-475	9-7081-475	28.9	2030	2175	8053	8495	155	185	19.8	23.7	9 3/8" x 5 13/16" x 4 1/16"	34 lbs.	<b>\$539.10</b>