

Swivel Plate Casters

New, various manufacturers plate mount swivel casters.

ITEM	Wheel Size	Load Capacity	Wheel Material	Mtg. Height	Shpg.	Price
1-6127	2½" x 1⅛"	120	Rubber	3⅝"	2.25 lbs.	\$2.95
1-6141*	3" x 1⅝"	125	Polyolefin	3⅞"	2 lbs.	\$2.95
1-5175	3" x 1⅜"	300	Sintered Iron	4¼"	3 lbs.	\$8.99
1-4469	3¼" x 1¼"	110	Plastic	4¼"	1.5 lbs.	\$2.95
1-6134*	4" x 1¼"	275	Polyolefin	5⅞"	2.9 lbs.	\$4.95
1-4213	4" x 1¼"	350	Polyolefin	5⅝"	3 lbs.	\$4.95
1-5088	4" x 1⅝"	358	Polyolefin	4⅞"	5 lbs.	\$4.95
1-4958	4" x 1⅝"	420	Hard Rubber	5"	4 lbs.	\$4.95
1-5018	5" x 1"	125	Thermo-plastic Rubber	5¾"	3 lbs.	\$2.99
1-5387*	5" x 1¼"		Yoke		2 lbs.	\$1.49
1-4299**	5" x 1¼"	280	Thermo-plastic Rubber	6⅞"	2 lbs.	\$11.95
1-4783	5" x 1¼"	275	Thermo-plastic Rubber	6⅞"	4 lbs.	\$3.99
1-4794***	5" x 1¼"	275	Polyurethane	6½"	4 lbs.	\$4.99
1-6128*	5" x 2"	1000	Solid Elastomer	6½"	6.15 lbs.	\$11.95
1-6131	6" x 2"	450	Polymer	7½"	6.55 lbs.	\$9.95
1-6132*	8" x 2"	600	Rubber	9½"	9 lbs.	\$12.95



2½" Brass Plated Ball Caster w/Plate

ITEM 1-5054
\$1.29



• New, SHEPHERD die cast ball wheel caster. No exposed axle, easy rolling. Use for furniture, office equipment. Bright brass finish.

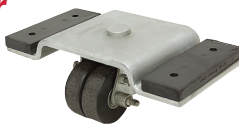
SPECIFICATIONS

- Wheel Size 2½" dia.
- Load Capacity 100 lbs.
- Mounting height 3"

- Mounting Plate 1½" x 1½"
- Mount 4 countersunk holes, ⅜" dia., 1" x 1"
- Shpg. 1 lb.

2.5" x .875" Swivel Plate Dual Caster w/ Isolation Pads

ITEM 1-1545
\$7.95



• Used. Ball bearing dual wheel swivel caster. Built for use under heavy office equipment. 4⅝" x 1¼" rubber pads on each end of plate. Individual bolt brakes for each wheel.

SPECIFICATIONS

- Wheel Size: Dual 2½" dia. x ⅞"
- Load Capacity 220 lbs.
- Top Plate: 9⅝" x 4⅞" x ⅝" thick

- Mounting height 3⅝"
- Mount: Four ⅜" dia holes in plate on 3" x 7⅞" pattern with ⅝" holes in rubber pad directly above.
- Shpg. 9 lbs.

3" x 1¼" Swivel Plate Caster w/ Brake

ITEM 1-5412
\$3.95



• New, Colson swivel plate caster.

SPECIFICATIONS

- Wheel Diameter 3" dia.
- Wheel Width 1¼" Wide
- Load Capacity 180 lbs.
- Mounting Height 3¾"
- Brake Wheel Lock
- Top Plate 4⅞" x 3⅞"
- Mount 4 holes on 3½" x 2⅝" centers

- Bolt Holes ⅝" dia.
- Wheel Tread Material: Gray Thermoplastic Rubber
- Caster Wheel Core Material Plastic
- Caster Wheel Bearing Ball
- Shpg. 2.5 lbs.

40.5mm x 17mm Swivel Plate Caster

ITEM 1-3312
.99¢



• New, FAULTLESS swivel plate caster for furniture. Polyurethane wheel. Brass finish yoke.

SPECIFICATIONS

- Wheel size 40.5mm x 17mm
- Load capacity 70 lbs.
- Top plate 1½" x 2" x ⅜"
- Mounting height 2"
- Mount 4 bolt on 26mm x 42mm ctrs.
- Bolt holes 7mm diameter
- Shpg. ¼ lb.

3" x 1¼" Swivel Plate Caster w/ Brake

ITEM 1-5307
\$5.95



• New, JARVIS swivel plate caster with polyolefin wheel with brake and 4½" long extension leg. Swivel plate has double-row ball bearings.

SPECIFICATIONS

- Model Number FB334521D5
- Wheel Diameter 3" dia.
- Wheel Width 1¼" Wide
- Load Capacity 250 lbs.
- Mounting Height 8⅝"
- Brake Wheel Lock
- Top Plate 3⅝" x 2⅝" x ⅝" thick

- Mount 4 holes on 3" x 1¼" centers
- Bolt Holes ⅝" dia.
- Wheel Tread Material Black Polyolefin
- Caster Wheel Core Material Polyolefin
- Caster Wheel Bearing None
- Shpg. 5 lbs.

3" x 2" Dual Wheel Swivel Plate Caster

ITEM 1-4311
\$2.95



• New, SHEPARD model PTS75120GR-U dual wheel swivel plate caster. Plated steel mounting plate. Thermoplastic elastomer wheels. Each wheel is 7/16" wide overall width is 2".

SPECIFICATIONS

- Wheel Size 3" dia. x 2" wide
- Load Capacity 165 lbs.
- Top Plate 3⅞" x 2½"

- Mounting height 4⅝"
- Mount 4 bolt on 2" x 1½" centers
- Bolt Holes ⅝" dia.
- Shpg. 1½ lbs.

2½" x 1¾" Swivel Plate Caster

ITEM 1-5408
\$2.95



• New, Colson swivel plate caster.

SPECIFICATIONS

- Wheel Diameter 2½" dia.
- Wheel Width 1⅝" Wide
- Load Capacity 175 lbs.
- Mounting Height 3½"
- Brake None
- Top Plate 3⅝" x 2⅝"
- Mount 4 holes on 3"-2¼" x 1¼" centers
- Bolt Holes ⅝" dia.
- Wheel Tread Material Black Hard Plastic
- Caster Wheel Core Material Plastic
- Caster Wheel Bearing Plain
- Shpg. 2.5 lbs.

2⅞" x ½" Dual Wheel Swivel Plate Caster w/ Brake

ITEM 1-4256
.95¢



• New, ALBION dual wheel swivel plate caster with wheel lock. Solid nylon wheels.

SPECIFICATIONS

- Wheel Size: 2⅞" dia. x ½" wide
- Load Capacity: 100 lbs.
- Top Plate 2⅝" x 2⅝"

- Mounting height 3⅝"
- Mount: 4 holes on 2" x 1⅝" centers
- Bolt Holes ⅝" dia.
- Shpg. ¾ lb.

5" x 1.25" Swivel Plate Caster w/ Brake

ITEM 1-3287
\$6.99



• Used, RHOMBUS swivel plate caster. Thermoplastic polyurethane tire with plastic wheel. Plated steel yoke. Wheel brake.

SPECIFICATIONS

- Wheel size 5" dia. x 1¼"
- Load capacity 220 lbs.
- Top plate 3¾" x 2¾" x ⅞"

- Mounting height 6"
- Mount 2⅞" x 1⅝"
- Bolt holes ⅝" dia.
- Shpg. 3 lbs.