

Inline Flow Control Valve

• Brand new, WOLVERINE by PRINCE inline flow control valves. Designed to provide flow control and shut-off in one flow direction while providing free flow in the opposite direction. Color bands for easy flow adjustments and fast return to previous setting. Set screw to lock valve to any setting. Carbon steel body.



ITEM	Model	Ports	PSI	GPM	Shpg.	Price
9-7960-4	WFC-400	1/4" NPT	5000	0-5	1 lb.	\$36.45
9-7960-6	WFC-600	3/8" NPT	5000	0-8	2 lbs.	\$39.85
9-7960-8	WFC-800	1/2" NPT	5000	0-15	3 lbs.	\$50.65
9-7960-12	WFC-1200	3/4" NPT	3000	0-25	4 lbs.	\$96.00
9-7960-16	WFC-1600	1" NPT	3000	0-40	7 lbs.	\$184.95

Inline Needle Valves



• Brand new, WOLVERINE by PRINCE inline needle valves. Designed to provide flow control in both directions. Carbon steel body.



ITEM	Model	Ports	PSI	GPM	Shpg.	Price
9-7961-4	WNV-400	1/4" NPT	5000	0-5	1 lb.	\$31.75
9-7961-6	WNV-600	3/8" NPT	5000	0-8	2 lbs.	\$48.60
9-7961-8	WNV-800	1/2" NPT	5000	0-15	3 lbs.	\$73.60
9-7961-12	WNV-1200	3/4" NPT	3000	0-25	4 lbs.	\$75.60
9-7961-16	WNV-1600	1" NPT	3000	0-40	7 lbs.	\$183.60

Inline Flow Control Valves

• Brand new, DYNAMIC inline flow control valves. Designed to provide flow control and shut-off in one flow direction while providing free flow in the opposite direction. Allen head lock screw to lock valve to any setting. Carbon steel body with black oxide plating and zinc alloy coated handle.

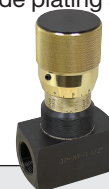


SPECIFICATIONS
 • Maximum Pressure 5000 psi
 • Temperature Range -4° to 176°F (-20°C to 80°C)

		NPT			
ITEM	Model	Ports	GPM	Shpg.	Price
9-16358-4	JPFC-1/4-NPT	1/4" NPT	0-10.5	1 lb.	\$26.45
9-16358-6	JPFC-3/8-NPT	3/8" NPT	0-15.5	2 lbs.	\$29.80
9-16358-8	JPFC-1/2-NPT	1/2" NPT	0-22.5	3 lbs.	\$33.15
9-16358-12	JPFC-3/4-NPT	3/4" NPT	0-46.0	3 lbs.	\$38.20
9-16358-16	JPFC-1-NPT	1" NPT	0-52.5	6 lbs.	\$69.20
9-16358-20	JPFC-1 1/4-NPT	1 1/4" NPT	0-79.0	13 lbs.	\$123.35
		SAE			
9-16359-6	JPFC-SAE-6	SAE 6	0-15.5	2 lbs.	\$29.80
9-16359-8	JPFC-SAE-8	SAE 8	0-22.5	3 lbs.	\$33.15

Inline Needle Valves

• Brand new, DYNAMIC inline needle valves. Designed to provide flow control in both directions. Allen head lock screw to lock valve to any setting. Carbon steel body with black oxide plating and zinc alloy coated handle.



SPECIFICATIONS
 • Maximum Pressure 5000 psi
 • Temperature Range -4° to 176°F (-20°C to 80°C)

		NPT			
ITEM	Model	Ports	GPM	Shpg.	Price
9-16360-4	JPNV-1/4-NPT	1/4" NPT	0-10.5	1 lb.	\$26.45
9-16360-6	JPNV-3/8-NPT	3/8" NPT	0-15.5	1 lb.	\$29.80
9-16360-8	JPNV-1/2-NPT	1/2" NPT	0-22.5	3 lbs.	\$33.15
9-16360-12	JPNV-3/4-NPT	3/4" NPT	0-46.0	3 lbs.	\$40.25
9-16360-16	JPNV-1-NPT	1" NPT	0-52.5	5 lbs.	\$69.20
9-16360-20	JPNV-1 1/4-NPT	1 1/4" NPT	0-79.0	10 lbs.	\$123.35
9-16360-24	JPNV-1 1/2-NPT	1 1/2" NPT	0-105.5	19 lbs.	\$218.15
		SAE			
9-16361-6	JPNV-06-SAE	SAE 6	0-15.5	1 lb.	\$29.80

3 Way High Pressure Ball Valves

• Brand new, DYNAMIC DE Series 3-way diverter ball valve. Suitable for hydraulic and water applications. Constructed of high-carbon steel with zinc-chromate plating. Standard POM ball seals with Buna stem seals.



	ITEM	PSI	Ports	Shpg.	Price
NPT	9-8595-4	5880	1/4" NPT	1 1/2 lbs.	\$ 49.20
	9-8595-6	5880	3/8" NPT	2 lbs.	\$ 51.60
	9-8595-8	5145	1/2" NPT	3 lbs.	\$ 55.00
	9-8595-12	5145	3/4" NPT	5 lbs.	\$ 79.85
	9-8595-16	5145	1" NPT	7 lbs.	\$ 96.25
	9-8595-20	4500	1 1/4" NPT	7 lbs.	\$152.85
	9-8595-24	4500	1 1/2" NPT	12 lbs.	\$187.35
	9-8595-32	4500	2" NPT	15 lbs.	\$220.70
	SAE	9-8596-4	5880	SAE 4	1 1/2 lbs.
9-8596-6		5880	SAE 6	2 lbs.	\$ 55.55
9-8596-8		5145	SAE 8	3 lbs.	\$ 59.80
9-8596-12		5145	SAE 12	5 lbs.	\$ 85.70
9-8596-16		5145	SAE 16	7 lbs.	\$101.55
9-8596-20		4500	SAE 20	7 lbs.	\$152.85
9-8596-24		4500	SAE 24	12 lbs.	\$193.00
9-8596-32		4500	SAE 32	15 lbs.	\$230.75

High Pressure Ball Valves

• Brand new, DYNAMIC Fluid Components DE2 Series ball valves. Suitable for hydraulic and water applications. Constructed of high-carbon steel with zinc-chromate plating. Standard POM ball seals with Buna stem seals. Temperature range -30 to 212° F.



	ITEM	PSI	Ports	Shpg.	Price	
NPT	9-7281-4	7250	1/4" NPT	1 1/2 lbs.	\$ 25.85	
	9-7281-6	7250	3/8" NPT	2 lbs.	\$ 27.45	
	9-7281-8	7250	1/2" NPT	3 lbs.	\$ 30.65	
	9-7281-12	5800	3/4" NPT	5 lbs.	\$ 59.05	
	9-7281-16	5000	1" NPT	7 lbs.	\$ 68.95	
	9-7281-20	5000	1 1/4" NPT	8 lbs.	\$ 81.70	
	9-7281-24	5000	1 1/2" NPT	10 lbs.	\$ 99.95	
	9-7281-32	5000	2" NPT	13 lbs.	\$141.90	
	SAE	9-7282-4	7250	SAE 4	1 1/2 lbs.	\$ 30.00
		9-7282-6	7250	SAE 6	2 lbs.	\$ 31.90
		9-7282-8	7250	SAE 8	3 lbs.	\$ 35.75
		9-7282-12	5800	SAE 12	5 lbs.	\$ 69.60
9-7282-16		5000	SAE 16	7 lbs.	\$ 84.25	
9-7282-20		5000	SAE 20	8 lbs.	\$ 90.45	
9-7282-24		5000	SAE 24	12 lbs.	\$110.90	
9-7282-32		5000	SAE 32	15 lbs.	\$149.20	