



## Hydraulic Clutch Pumps



• Brand new. Hydraulic pump driven by 12 volt DC clutch. For use in marine, agricultural and industrial use. Use for remote hydraulics in service trucks, boats, trucks with automatic transmissions, farm tractors, snowplows, etc.

### SPECIFICATIONS FOR ALL

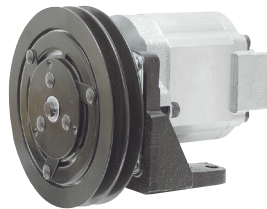
- 12 VDC operation
- 3000 RPM max.
- Cast iron foot mount
- CW rotation
- Rear ports: IN SAE 16, OUT SAE 12

### Three Styles Available

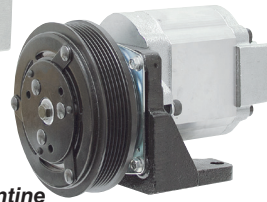
**V-Belt:** 7" diam. 2 belt 1/2" A type v-belt clutch

**6 Groove Serpentine:** 6" diam., 6 groove serpentine clutch

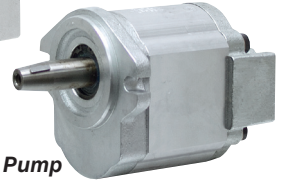
**8 Groove Serpentine:** 5 7/8" diam., 8 groove serpentine clutch



V-Belt



Serpentine



Replacement Pump

ITEM #		GPM at				Replacement Pumps			
		2000 RPM	Displ.	PSI	Shpg.	Price	ITEM	Shpg.	Price
9-1737	V-Belt	12 GPM	1.45 cu. in.	3000	32 lbs.	\$985.90	9-1737-P	16 lbs.	\$791.00
9-1738	V-Belt	20 GPM	2.32 cu. in.	2200	33 lbs.	\$973.50	9-1738-P	16 lbs.	\$717.00
9-1737-S-6	6 Groove	12 GPM	1.45 cu. in.	3000	32 lbs.	\$1028.05			
9-1738-S-6	6 Groove	20 GPM	2.32 cu. in.	2200	33 lbs.	\$954.05			
9-1737-S-8	8 Groove	12 GPM	1.45 cu. in.	3000	32 lbs.	\$1004.65			
9-1738-S-8	8 Groove	20 GPM	2.32 cu. in.	2200	33 lbs.	\$973.30			

### Replacement V-Belt Clutch

ITEM 1-2184

**\$148.60**

- V-belt clutch. Shpg. 12 lbs.



### Replacement Serpentine Clutches

- Shpg. 10 lbs. each

ITEM 1-2184-S-6 6 Groove

**\$192.50**

ITEM 1-2184-S-8 8 Groove

**\$168.10**

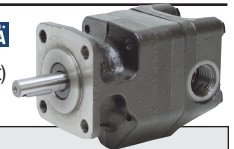


## MTE Hydraulic Pumps

• Brand new, MTE hydraulic pumps. Cast iron body. Made for direct drive, no shaft side-loading. Made in USA.

### SPECIFICATIONS

- CW Rotation
- Shaft 1/2" diam. x 1 1/2" w/1/8" keyway
- 4F17 mount (1.78" dia. Pilot)
- 3600 RPM



ITEM	Displ.	GPM at		PSI		Ports		Size	Shpg.	Price
		3600 RPM	Cont.	Int.	Inlet	Outlet				
9-8401-67	0.067	1.04	3000	4000	SAE 6	SAE 6	3.82" x 2.8" x 3.66"	5 lbs.	\$130.95	
9-8401-97	0.097	1.51	3000	4000	SAE 6	SAE 6	3.89" x 2.8" x 3.66"	5 lbs.	\$125.50	
9-8401-129	0.129	2.00	3000	4000	SAE 8	SAE 6	3.95" x 2.8" x 3.66"	5 lbs.	\$127.40	
9-8401-192	0.192	2.98	3000	4000	SAE 8	SAE 6	4.08" x 2.8" x 3.66"	5 lbs.	\$137.00	
9-8401-251	0.251	3.92	2300	4000	SAE 8	SAE 8	4.2" x 2.8" x 3.66"	5 lbs.	\$166.20	
9-8401-277	0.277	4.32	2100	3500	SAE 8	SAE 8	4.26" x 2.8" x 3.66"	5 lbs.	\$166.40	
9-8401-323	0.323	5.04	1900	3000	SAE 10	SAE 8	4.35" x 2.8" x 3.66"	6 lbs.	\$140.05	
9-8401-434	0.434	6.76	1600	2500	SAE 10	SAE 10	4.58" x 2.8" x 3.66"	6 lbs.	\$170.55	
9-8401-479	0.479	7.46	1300	2250	SAE 10	SAE 10	4.68" x 2.8" x 3.66"	6 lbs.	\$145.05	

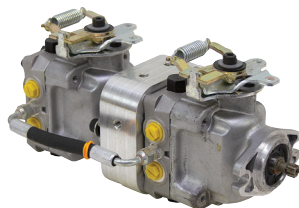
## 0.36/0.36 cu in Hydro-Gear Hydraulic Pump

ITEM 9-12325  
**\$199.95**

- New, HYDRO-GEAR hydraulic double pump. Numbers on pumps TW-QFFB-NFFB-1XBX,/ PC-NNFF-5B1X-AXXX .

### SPECIFICATIONS

- Disp. Front 0.36 cu. in. / rev. Rear 0.36 cu. in. / rev.
- Pump Type Piston
- Rotation CW
- Mount SAE AA
- Pressure: 750 PSI cont. 1750 PSI int.
- Speed: 3600 RPM max
- Flow: 5.4 GPM cont. 5.4 GPM cont.
- Shaft 1/2" dai. 9 tooth x 3/4"
- Inlet Port SAE 6
- Outlet Port SAE 6
- Size 12 1/2" x 6" x 6 1/4"
- Shpg. 20 lbs.



## Reliance John Deere Replacement Hydraulic Pumps

• Brand new RELIANCE replacement pressure compensated radial piston pump for use with many models of John Deere farm tractors and industrial equipment. See our website for a list of John Deere machines this pump is compatible with. Pump is 100% new, not rebuilt or remanufactured and has been run on test bench to check pressures and functionality. Pump carries a 1-year parts and labor warranty.

ITEM 9-8095

**\$1267.50**

- Model NAR94660/NAR101807. Displ. 3.0 cu. in. / rev., flow 24 GPM at 1750 RPM.

ITEM 9-8564

**\$1417.50**

- Model NAR94661. Displ. 4.0 cu. in./ rev., flow 30 GPM at 1750 RPM.

### SPECIFICATIONS

- Pump type radial piston
- Inlet port SAE 20
- Rotation CCW
- Inlet/return port SAE 10
- Pressure 2350 PSI max.
- Outlet port SAE 12
- Speed 2800 RPM max.
- Drain port SAE 3
- Mount 4 bolt
- Size 6 1/4" x 10" x 8"
- Shaft 1 1/4" dia. 14T spline
- Shpg. 74 lbs.



9-8095



9-8564