

50 GPM 12 VDC Oil Cooler



ITEM 9-12925
\$334.95

• Brand new. AKG DS1-12 oil cooler that features tube and fin aluminum design, and 12 VDC fan.

SPECIFICATIONS

- Model DS1-12
- Pressure 232 PSI max
- Temperature 250°
- Flow 50 GPM
- Fan Motor Voltage 12 VDC
- Amps 5.8
- Airflow Direction Pull
- Port Size SAE 16
- Drain/Temperature Sensor Port SAE 8
- Mount Four holes on 7.87" x 3.94" centers
- Size 11" x 5.25" x 8.87"
- Shpg 9 lbs.



6 Spool Control Valve

ITEM 9-12290
\$299.95

• New, WALVOIL SD6 sectional directional control valve. Features cast iron construction, load check, adjustable flow control, open center, and vertical or horizontal handle mounting.

SPECIFICATIONS

- Open Center
- Spools Six
- Flow 12 GPM max.
- Pressure 4600 PSI max.
- Relief Valve none
- In/Out Ports SAE 8
- Work Ports SAE 8
- Size 12½" x 11" x 6½"
- Shpg. 55 lbs.



2 Spool Control Valve

ITEM 9-12699-A
\$159.95

• *New, CHIEF directional control valve for operating double acting cylinders. Features include monoblock construction, built-in adjustable pressure relief valve, load check, spring centering spool action and vertical or horizontal handle mounting.

SPECIFICATIONS

- Open Center
- Spools Two
- Flow 32 GPM max
- Pressure 3625 PSI max
- Relief Valve Adjustable set at 2500 PSI
- In/Out Ports SAE 16 (side or top)
- Work Ports SAE 12
- Mount 3 hole base
- Size 13" x 9" x 15¼"
- Shpg 46 lbs.



1 Spool Control Valve

ITEM 9-12698-A
\$59.95

• *New, Chief P80-CV1 valve is a versatile 3-way OR 4-way, 3 position spring centering directional control valve for use with either double-acting or single-acting cylinders. Includes adapters to convert 4-way to 3-way valve.

SPECIFICATIONS

- Open Center
- Spools One
- Flow 21 GPM
- Pressure 2500 PSI max
- In/Out Ports SAE 10
- Relief Valve 2500 PSI @ 10 GPM
- Work Ports SAE 8
- Size 10" x 5" x 10"
- Shpg 11 lbs.

*New inventory from a retail store buyback. May have cosmetic imperfections and exterior soiling from retail shelf display.

Single Acting Telescoping Cylinders

• Brand new, MAXIM, single-acting, three-stage, telescoping cylinders.

SPECIFICATIONS

- For All
- Single Acting, Telescoping
- Number of Stages 3
- Pressure 2500 PSI max.
- Base End Male Trunnion
- 9-16331 1¼" Male Pin
- 9-16332 1½" Male Pin
- Rod Dia. 2"
- Port ½" NPT
- Retracted Length 6"
- Rod End Pin Hole 1"

Truck freight only.



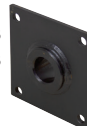
7 Ton

ITEM	Bore	Stroke	Shpg.	Price
9-16331-78	3"	78"	122 lbs.	\$478.30
9-16331-90	3"	90"	132 lbs.	\$540.90
9-16331-108	3"	108"	146 lbs.	\$587.55

12 Ton

ITEM	Bore	Stroke	Shpg.	Price
9-16332-78	3.625"	78"	170 lbs.	\$772.35
9-16332-90	3.625"	90"	184 lbs.	\$781.80
9-16332-108	3.625"	108"	210 lbs.	\$931.25
9-16332-120	3.625"	120"	222 lbs.	\$1030.90

• Brand new. Mounting brackets for our 9-16331 and 9-16332 series cylinders. Requires two brackets for mounting cylinder.



SPECIFICATIONS

- For Both
- Dimensions 5" x 5" x ¼"
- Bore Thru Length 1½"
- Mounting Holes 7/16" dia. on 4" x 4" centers
- Shpg. 4 lbs.

ITEM 9-16331-B Pin Hole 1.25" **\$21.35**

ITEM 9-16332-B Pin Hole 1.51" **\$24.50**

Hose Wraps

• Brand new, TOMPKINS PROWRAP PLUS polyethylene wraps. Provides protection against abrasive wear and crushing damage, resistant to chemical attack and suitable for use with all hydraulic fluids including glycol and phosphate ester based products. Installs easily without disconnecting any lines. Wrap individual lines or bundle hoses.

ITEM	Model	Fits	Length.	Wall			Shpg.	Price
				I.D.	Thcknss	O.D.		
9-16468-12	PWP-12	3/8" - 7/16" O.D. Hose	165'	0.38"	0.06"	0.5"	7 lbs.	\$202.95
9-16468-16	PWP-16	7/16" - 5/8" O.D. Hose	66'	0.49"	0.07"	0.63"	5 lbs.	\$93.10
9-16468-20	PWP-20	5/8" - 7/8" O.D. Hose	66'	0.63"	0.08"	0.79"	8 lbs.	\$114.85
9-16468-25	PWP-25	7/8" - 1 1/8" O.D. Hose	66'	0.83"	0.08"	0.99"	9 lbs.	\$128.70
9-16468-32	PWP-32	1 1/8" - 1 3/8" O.D. Hose	66'	1.06"	0.1"	1.26"	13 lbs.	\$157.45
9-16468-40	PWP-40	1 1/2" - 1 5/8" O.D. Hose	66'	1.34"	0.12"	1.58"	17 lbs.	\$202.00
9-16468-50	PWP-50	1 3/4" - 2 1/2" O.D. Hose	66'	1.73"	0.16"	2.05"	23 lbs.	\$244.55
9-16468-63	PWP-63	2" - 3" O.D. Hose	66'	2.17"	0.16"	2.49"	42 lbs.*	\$364.35
9-16468-75	PWP-75	2 1/4" - 3 1/4" O.D. Hose	66'	2.6"	0.18"	2.96"	75 lbs.*	\$500.95
9-16468-90	PWP-90	3" - 5" O.D. Hose	66'	3.11"	0.22"	3.55"	79 lbs.*	\$763.30
9-16468-110	PWP-110	3 7/8" - 6" O.D. Hose	40'	3.9"	0.22"	4.34"	81 lbs*	\$715.80

* Dimensional Shipping Weight

3/8" NPT 8 GPM Check Valve

ITEM 9-16140-6
\$19.40



• New, WOLVERINE model WCV-600, inline check valve. Carbon steel body.

SPECIFICATIONS

- Cracking Pressure 10 to 12 PSI
- Pressure 5000 PSI Max
- Flow 8 GPM
- Ports 3/8" NPT
- Size 1" dia. x 2.56"
- Shpg. 0.5 lb.

Quick Coupler Set

ITEM 9-16312

\$20.95



• New, Flush face quick coupler. Includes body and tip. Commonly used on construction and agricultural equipment. Plated steel construction.

Interchangeable with Parker FEM, Faster FF, Holmburg Series A and other brands of quick couplings that conform to ISO 16028 dimensional requirements.

SPECIFICATIONS

- ISO Standard 16028
- ISO Body Size 3/8"
- Ports SAE 8
- Tip Diameter 0.775"
- Pressure, Working 3000 PSI Max
- Pressure, Burst 12000 PSI
- Flow 6 GPM Max
- Temperature Range -25° C to 125° C
- Size 1.25" dia. x 4.75"
- Shpg. 3 lbs.

Quick Coupler Set

ITEM 9-16085

\$34.95



• Brand new, PRESSURE COMPONENTS INC FF series flush face quick coupler. Includes body and tip. Commonly used on construction and agricultural equipment. Zinc nickel plated steel construction.

Interchangeable with Parker FF/FE, Aeroquip FD 89, Faster 2 FF I, Safeway S49, Holmbury FIMC and other brands of quick couplings that conform to 16028 dimensional requirements.

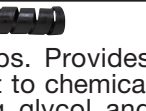
SPECIFICATIONS

- ISO Standard 16028
- ISO Nominal Size 1/2"
- ISO Size 12.5
- Ports ½" NPT
- Tip Diameter 0.96"
- Pressure, Burst 23,925 PSI
- Pressure, Working 5000 PSI Max
- Flow 19.8 GPM Max
- Temperature Range -22° F to +230° F
- Size 1.5" dia. x 5.35"
- Shpg. 3 lbs.

Rotary Directional Valve

ITEM 9-8611

\$62.05



• Brand new, BRAND HYDRAULICS, model HPV4 rotary directional control valve for double acting cylinders. All ports blocked in center position.

SPECIFICATIONS

- Closed Center
- Spools One
- Flow 5 GPM max.
- Pressure 6000 PSI max.
- Relief Valve None
- In/Out Ports ¼" NPT
- Work Ports ¼" NPT
- Mount Two ¼-20 tapped holes in body
- Size 1.8" dia. x 2.5"
- Shpg. 2 lbs.