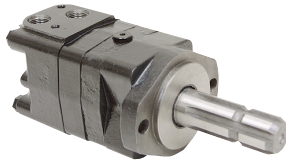




PTO Drive Motors

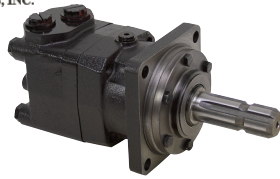


- Brand new, hydraulic motor with agricultural standard 6 tooth splined shaft. Gerolor power element. Tapered roller bearings on output shaft for high axial and radial load capacity. Shaft has retention groove centered 1½" from shaft end.
- Interchangeable with the following motor lines: Char-Lynn 2000, Danfoss OMS/OMSS, White RE/DH, Parker-Ross MB/TF.

SPECIFICATIONS FOR ALL

- Rotation reversible
- Case drain SAE 4
- Ports SAE 10
- Shaft 1¾" x 4" 6T spline
- Mount 2 bolt SAE A
- Size 7¾" x 5⅞" x 4⅞"

ITEM	Displ. cu. in.	PSI		Torque in. lbs.		RPM		GPM		GPM at 540RPM at Cont. PSI	HP		Shpg.	Price
		Cont.	Int.	Cont.	Int.	Cont.	Int.	Cont.	Int.		Con	Int.		
9-7368-80	4.95	2576	3091	1682	2124	800	990	17.1	21	12.8	21.3	26.9	26 lbs.	\$390.15
9-7368-100	6.15	2576	3091	2124	2655	748	900	19.7	23.6	15.9	25.2	31.5	27 lbs.	\$394.35
9-7368-125	7.63	2576	3091	2744	3275	600	720	19.7	23.6	21.2	26.1	31.1	28 lbs.	\$398.55
9-7368-160	9.59	2208	3091	2780	3805	470	560	19.7	23.6	23.8	20.9	28.4	29 lbs.	\$402.75



- Brand new, DYNAMIC BMT series hydraulic motor with agricultural standard six tooth splined shaft. Heavy duty with high flow capacity. ROLORTORC power element. Tapered roller bearings on output shaft for high axial and radial load capacity. Shaft has retention groove centered 1½" from shaft end. Interchangeable with DANFOSS OMT motors.

SPECIFICATIONS FOR BOTH

- Rotation reversible
- Case drain SAE 4
- Ports SAE 12
- Shaft 1¾" x 5" 6T spline
- Mount 4 bolt SAE C

ITEM	Model	Displ. cu. in.	PSI		Torque in. lbs.		RPM		GPM		Size	Shpg.	Price
			Cont.	Int.	Cont.	Int.	Cont.	Int.	Cont.	Int.			
9-16100-160	BMT-160-K6-SL-S	9.83	2944	3533	4168	5071	614	770	26.42	33.02	7½" x 5⅝" x 5⅝"	47 lbs.	\$629.70
9-16100-200	BMT-200-K6-SL-S	12.29	2944	3533	5213	6354	615	743	33.02	39.63	7⅝" x 5⅝" x 5⅝"	48 lbs.	\$637.15



Heavy Duty Hydraulic Motors

- Brand new, DYNAMIC BMK6 heavy duty hydraulic motors. Interchangeable with Char-Lynn 6000 series motors.

SPECIFICATIONS

- Rotation reversible
- Mount SAE C 4 bolt, 6⅝" bolt circle, 5" pilot dia.
- Shaft 1½" dia. x 3.01" shaft with ⅜" key, tapped ⅝-16
- Ports SAE 16

ITEM	Displ.	PSI		Torque in. lbs.		RPM		GPM		Size	Shpg.	Price
		Cont.	Int.	Cont.	Int.	Cont.	Int.	Cont.	Int.			
9-8665-200	11.93	2900	4350	5000	7434	765	865	39.6	44.9	10.43" x 5.75" x 5.75"	61 lbs.	\$690.20
9-8665-250	15.01	2900	4350	6284	9558	610	830	39.6	54.1	10.67" x 5.75" x 5.75"	62 lbs.	\$703.05
9-8665-315	19.01	2900	4350	8142	11727	480	690	39.6	59.4	10.94" x 5.75" x 5.75"	64 lbs.	\$705.85
9-8665-400	23.87	2900	4350	10266	14382	382	570	39.6	59.4	11.30" x 5.75" x 5.75"	65 lbs.	\$734.35
9-8665-500	29.95	2900	3985	12789	16639	304	455	39.6	59.4	11.73" x 5.75" x 5.75"	68 lbs.	\$789.30
9-8665-630	38.01	2535	3260	13099	13726	240	360	39.6	59.4	12.32" x 5.75" x 5.75"	71 lbs.	\$804.95
9-8665-800	48.96	2030	2245	13984	16639	186	280	39.6	59.4	13.11" x 5.75" x 5.75"	75 lbs.	\$831.05
9-8665-1000	59.9	2030	2030	14824	16462	152	230	39.6	59.4	13.89" x 5.75" x 5.75"	79 lbs.	\$881.60



Hydraulic Wheel Motors

- Brand new, DYNAMIC BMER-2 series wheel mount hydraulic motors. Interchangeable with PARKER and WHITE motors.

SPECIFICATIONS

- Rotation reversible
- Mount 4 bolt wheel 5.812 bolt circle, 3¼" pilot dia.
- Shaft 1¼" tapered x 4.21" shaft w/⅝" key and threaded end
- Ports SAE 10

ITEM	Displ. cu. in.	PSI		Torque in. lbs.		RPM		GPM		Size	Shpg.	Price
		Cont.	Int.	Cont.	Int.	Cont.	Int.	Cont.	Int.			
9-8592-125	7.2	2970	3480	2876	3363	360	490	14.0	15.8	4.68" x 5.24" x 5.43"	29 lbs.	\$387.45
9-8592-160	9.52	2970	3480	3983	4646	375	470	15.8	19.8	4.80" x 5.24" x 5.43"	30 lbs.	\$391.60
9-8592-200	11.96	2970	3480	4691	5310	330	425	17.9	22.4	4.94" x 5.24" x 5.43"	31 lbs.	\$396.45
9-8592-230	13.91	2970	3480	5531	6284	290	365	17.9	22.4	5.04" x 5.24" x 5.43"	31 lbs.	\$413.80
9-8592-250	15.68	2970	3480	6195	6992	290	350	19.8	23.7	5.14" x 5.24" x 5.43"	32 lbs.	\$418.65
9-8592-300	18.08	2970	3480	7169	8231	250	315	19.8	25	5.30" x 5.24" x 5.43"	32 lbs.	\$422.80
9-8592-350	21.05	2970	3480	8009	9160	220	270	19.8	25.0	5.43" x 5.24" x 5.43"	33 lbs.	\$436.65
9-8592-375	22.63	2970	3480	8762	10089	200	240	19.8	23.7	5.53" x 5.24" x 5.43"	34 lbs.	\$476.85
9-8592-475	28.18	2535	2973	9602	10443	160	195	19.8	23.7	5.83" x 5.24" x 5.43"	35 lbs.	\$503.90
9-8592-540	32.94	2030	2535	8673	10974	140	170	19.8	23.7	6.14" x 5.24" x 5.43"	36 lbs.	\$512.90
9-8592-750	45.45	1520	1740	9293	10443	100	120	19.8	23.7	6.93" x 5.24" x 5.43"	40 lbs.	\$548.95