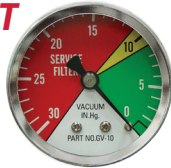




**Optional 1/8" NPT Condition Indicator Gauge** ⚠️



ITEM 9-4544-G

**\$11.90**

• For use on ITEMS 9-077, 9-7295, 9-4544 suction line filters only. **Shpg. 1/2 lb.**

**Zinga Spin-On Filter Assemblies** ⚠️

• Brand new, ZINGA spin-on type element. Full flow filtering up to bypass cracking point, partial filtering beyond. 250° F max. Suction line filters have 1/8" NPT port for optional condition indicator.



Filter Assemblies (Head and Element)										Replacement Elements	
Ports	ITEM	Application	GPM	Max. Bypass Micron			Size	Shpg.	Price	ITEM	Price
				PSI	PSI	Rating					
3/4" NPT	9-059	Return Line	20	100	25	10	7 1/2" x 3 3/4" x 3 1/2"	3 lbs.	\$22.20	9-059-10	\$11.15
	9-077	Suction Line	9	100	5	25	7 1/2" x 3 3/4" x 3 1/2"	3 lbs.	\$37.40	9-059-25	\$10.85
1 1/4" NPT	9-4543	Return Line	70	200	25	10	5 9/8" diam. x 9 9/8"	6 lbs.	\$39.95	9-4543-10	\$18.00
	9-4544	Suction Line	25	200	5	25	5 9/8" diam. x 9 9/8"	6 lbs.	\$40.95	9-4543-25	\$18.00
1 1/2" NPT	9-7294	Return Line	70	200	25	10	5 1/8" diam. x 13 7/8"	6 lbs.	\$57.95	9-7294-10	\$24.00
	9-7295	Suction Line	25	200	5	25	5 1/8" diam. x 13 7/8"	6 lbs.	\$58.95	9-7294-25	\$24.00

**1 Quart Hydrostatic Tank w/Filter**



ITEM 9-8944

**\$49.99**

• New, extruded aluminum with deep fins for cooling. Use as expansion tank/cooler on dual hydrostatic pump mowers. Connects to case drain and charge pump ports on hydrostatic pumps. Fill port on top. Internal markings for hot and cold oil levels. Furnished with 90 degree adapters to 3/8" ID Push-Lok hose.

**SPECIFICATIONS**

- Oil Capacity 1 quart
- Filter Rating 10 micron
- Ports (4) SAE 6
- Size 5" x 5" x 12 1/2"
- Shpg. 8 lbs.

**High Pressure Inline Filter** ⚠️



ITEM 9-7292

**\$251.30**

• Brand new, ZINGA series HP3000 high pressure inline filter. Ductile iron housing. Buna-N Seals. Visual differential pressure indicator.

**SPECIFICATIONS**

- 10 micron filter
- 60 GPM
- SAE 12 ports
- 3000 PSI max.
- By-pass valve setting 50 PSI
- Size 3" diam. x 9 3/4"
- Shpg. 11 lbs.

**Replacement Filter Element**

ITEM 9-7292-10 ⚠️ 10 micron **\$15.60**

**Inline High Pressure Filter** ⚠️



ITEM 9-7297

**\$112.80**

• Brand new, ZINGA Series CF-90 high pressure filter. Designed for use as final filter to protect control valves, not as total system filter.

**SPECIFICATIONS**

- 12 GPM
- 10 micron
- SAE 8 ports
- 3000 PSI max.
- By-pass valve setting 50 PSI
- Size 5" x 2 1/2" x 2"
- Shpg. 3 lbs.

**Replacement Filter Element**

ITEM 9-7297-10 ⚠️ 10 micron **\$41.25**

**Tank Clean-Out Cover**



ITEM 9-12464

**\$24.90**

• Brand new, BUYERS model CPA56 hydraulic tank clean-out filter flange with cover assembly. Ideal tank accessory for access to clean and provide maintenance on hydraulic reservoirs or installing a filter. Includes 1/8" thick steel plate with 5" opening to weld to reservoir, 4 bolt galvanized cover plate and gasket.

**SPECIFICATIONS**

- Nominal Hole Size 5"
- Plate Dimensions 7 3/4" x 7 3/4" x 1/8"
- Cover Bolt Hole Dimensions 4 bolt on 6 1/4" bolt circle
- Shpg. 4 lbs.

**High Pressure Inline Filter** ⚠️



ITEM 9-7293

**\$211.50**

• Brand new, ZINGA Series P3000 high pressure inline filter. Ideal for external charge pump filtration and high shock return line filtration. Buna-N Seals. Visual differential pressure indicator.

**SPECIFICATIONS**

- 10 micron filter
- 30 GPM
- SAE 12 ports
- 3000 PSI max.
- Size 4" diam. x 13 1/2"
- Operating temp. -40° to 250° F
- By-pass valve setting 50 PSI
- Shpg. 6 lbs.

**Replacement Filter Element**

ITEM 9-7293-10L ⚠️ 10 micron **\$40.75**

**3/8" NPT Zinga Return Inline Filter**



ITEM 9-7291

**\$16.95**

• Brand new, ZINGA.

**SPECIFICATIONS**

- 10 micron return line application
- 7 GPM return line
- 200 PSI max.
- Ports 3/8" NPT
- 250° F max.
- Built-in 18 PSI by-pass
- Size 3 1/8" diam. x 4 1/2"
- Shpg. 1 1/2 lbs.

**Replacement Filter Element**

ITEM 9-7291-10-18 **\$11.45**

10 micron ⚠️

**7 GPM Return Line Filter**



ITEM 9-8995

**\$8.95**

• New, FILTRATION PRODUCTS hydraulic filter with FPE-15-10N-BLA spin on element. No bypass.

**SPECIFICATIONS**

- Application Return Line
- Ports 3/8" NPT
- Flow Rate 7 GPM max.
- Filtration 10 Micron
- Size 3 1/16" dia. x 4 5/8" long
- Shpg. 1 1/2 lbs.

**1 1/4" NPT 50 GPM In-Tank Filter**



ITEM 9-12679-10

**\$122.75**

• Brand new, Buyers Products high volume return line filter model HFA51025. Discharges out bottom of housing. Aluminum construction with plastic filter housing. The assembly comes with the filter head and a 10 micron filter element.

**SPECIFICATIONS**

- Manufacturer Buyers Products
- Model Number HFA51025
- Application Return Line
- Port 1 1/4" NPT
- Flow Rate 50 GPM
- Filtration 10 micron
- Filter Media Cellulose
- Pressure 100 PSI max.
- Bypass 25 PSI
- Temperature Range -22° F to 212° F
- Tank Opening Required 4 7/8"
- Bolt Pattern Four 7/16" holes on 6 1/4" bolt circle
- Depth in Tank 9"
- Size 6 5/16" x 6" x 13"
- Shpg. 9 lbs.

ITEM 9-12679-25 **\$110.75**

• Same as ITEM above except 25 micron

**Replacement Filter Element**

ITEM 9-12679-10-10 10 micron **\$20.35**

**Replacement Filter Element**

ITEM 9-12679-25-25 25 micron **\$20.35**