



### BM5 Motors

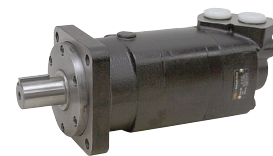


- Brand new HYDRO CUSTOM BM5 hydraulic motors. Gerolor power element. Interchangeable with Char-Lynn 2000 series motors. Double tapered roller bearings permit high radial loads. Reversible rotation. SAE 10 ports with SAE 4 case drain. SAE A 2 bolt mounts. Choice of Shafts: 1" x 1.615" long with 1/4" wide parallel key, end tapped 1/4"-20 or 1.25" x 1.811" long with 5/16" wide woodruff key, end tapped 3/8"-16

1" Keyed Shaft		1.25" Keyed Shaft		Disp. Cu in	PSI		Torque in. lbs.		RPM		GPM		Shpg.
Item #	Price	Item #	Price		Cont.	Int.	Cont.	Int.	Cont.	Int.	Cont.	Int.	
9-16447-80	\$309.60	9-16448-80	\$309.60	4.88	2980	4350	2033	2555	799	908	20	22	25 lbs.
9-16447-100	\$309.60	9-16448-100	\$309.60	6.1	3045	4350	2564	3359	742	924	20	25	26 lbs.
9-16447-125	\$309.60	9-16448-125	\$309.60	7.62	3045	4350	3182	4243	576	720	20	25	27 lbs.
9-16447-160	\$309.60	9-16448-160	\$309.60	9.76	3045	3770	4058	4685	460	713	20	30	28 lbs.
9-16447-200	\$309.60	9-16448-200	\$309.60	12.2	3045	3770	4791	5622	365	577	20	30	29 lbs.
9-16447-250	\$309.60	9-16448-250	\$309.60	15.25	2900	3770	5658	6895	294	462	20	30	30 lbs.
9-16447-305	\$309.60	9-16448-305	\$319.40	18.61	2900	3480	5967	6851	246	365	20	30	30 lbs.
9-16447-400	\$319.40	9-16448-400	\$319.40	24.4	2320	2465	7337	8044	183	287	20	30	32 lbs.
9-16447-500	\$322.80	9-16448-500	\$322.80	30.51	1740	2030	7470	8398	148	230	20	30	34 lbs.

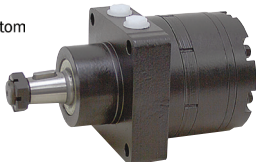


### BM6 Motors

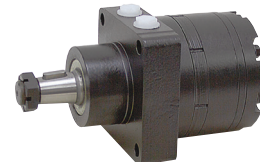


- Brand new HYDRO CUSTOM BM6 series hydraulic motors. Gerolor power element. Double tapered roller bearings permit high radial loads. Interchangeable with Char-Lynn 6000 series motors. Reversible rotation. SAE C 4 bolt mount. 1.50" x 3.110" long keyed shaft with 3/8" wide parallel key, end tapped 3/8"-16. Ports SAE 16, case drain SAE 4.

ITEM	Displ. Cu. In.	PSI		Torque in. lbs.		RPM		GPM		Shpg	Price
		Cont.	Int.	Cont.	Int.	Cont.	Int.	Cont.	Int.		
9-16449-195	11.89	2975	4500	5083	7602	775	866	40	45	57 lbs.	\$576.05
9-16449-245	14.95	2975	4500	6497	10440	615	834	40	55	61 lbs.	\$630.50
9-16449-310	18.91	2975	4500	8212	11934	485	689	40	60	62 lbs.	\$646.35
9-16449-395	24.1	2975	4500	10051	14453	383	563	40	60	65 lbs.	\$653.05
9-16449-490	29.9	2450	3990	10723	16619	307	454	40	60	70 lbs.	\$690.10
9-16449-625	38.13	2030	2465	11731	12155	241	355	40	60	70 lbs.	\$721.65
9-16449-800	48.81	1740	2030	12483	14551	184	276	40	60	74 lbs.	\$756.65
9-16449-985	60.1	1740	2030	13852	16540	153	230	40	60	74 lbs.	\$762.80



### BMEW Motors



- Brand new HYDRO CUSTOM BMEW series hydraulic wheel motors. Gerolor power element. Needle bearings allow for high axial and radial loads. Reversible rotation. Wheel mount has four bolt holes on 5.81" B.C. with 3 1/4" O.D. pilot. 1 1/4" x 4.094" long tapered shaft with 5/16" wide parallel key, end threaded 1"-20 with castle nut. Ports SAE 10, no case drain.

ITEM	Displ. Cu. In.	PSI		Torque in. lbs.		RPM		GPM		Shpg	Price
		Cont.	Int.	Cont.	Int.	Cont.	Int.	Cont.	Int.		
9-16450-125	7.62	3000	3480	3088	3611	336	450	11.8	15.8	28 lbs.	\$364.45
9-16450-160	9.76	3000	3480	4159	4850	350	440	15.8	19.8	28 lbs.	\$397.25
9-16450-200	12.2	3000	3480	4708	5328	330	425	18.4	22.4	29 lbs.	\$379.90
9-16450-230	14.03	3000	3480	5531	6284	290	365	18.4	22.4	29 lbs.	\$379.90
9-16450-250	15.25	3000	3480	6195	6992	290	350	19.8	23.7	30 lbs.	\$414.05
9-16450-300	18.3	3000	3480	7169	8231	250	315	21.1	25.1	30 lbs.	\$414.05
9-16450-350	21.35	3000	3480	8009	9160	215	365	21.1	25.1	31 lbs.	\$417.45
9-16450-375	22.88	3000	3480	8762	10089	200	240	19.8	23.7	32 lbs.	\$420.80
9-16450-475	28.98	2540	2750	9824	10691	150	180	19.8	23.7	33 lbs.	\$389.15
9-16450-540	32.95	2030	2540	8673	10974	140	170	19.8	23.7	34 lbs.	\$427.55
9-16450-750	45.76	1520	1740	9293	10443	100	120	19.8	23.7	37 lbs.	\$441.00