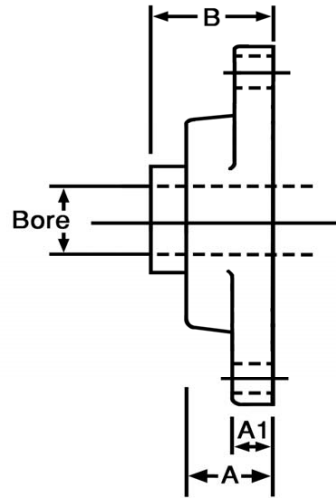
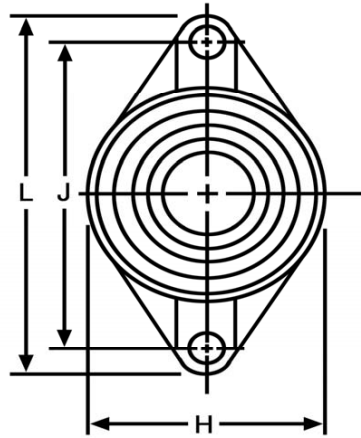


2 Bolt Flange Bearings - UCFL Series



2 Bolt Flange

200 Series

Bore	Item Number	Bearing #	Housing #	Set Screw UNF	Dimensions						Bore	
					A	A1	B	H	J	L		Bolt
UCFL Series - Two Set Screws, No Lock Collar												
1/2"	1-201-08-2	UC201-08	FL204	1/4"-28	1.004"	0.433"	1.312"	2.362"	3.543"	4.449"	3/8"	1/2"
5/8"	1-202-10-2	UC202-10	FL204	1/4"-28	1.004"	0.433"	1.312"	2.362"	3.543"	4.449"	3/8"	5/8"
3/4"	1-204-12-2	UC204-12	FL204	1/4"-28	1.004"	0.433"	1.312"	2.362"	3.543"	4.449"	3/8"	3/4"
7/8"	1-205-14-2	UC205-14	FL205	1/4"-28	1.063"	0.512"	1.405"	2.677"	3.898"	5.118"	7/16"	7/8"
15/16"	1-205-15-2	UC205-15	FL205	1/4"-28	1.063"	0.512"	1.405"	2.677"	3.898"	5.118"	7/16"	15/16"
1"	1-205-16-2	UC205-16	FL205	1/4"-28	1.063"	0.512"	1.405"	2.677"	3.898"	5.118"	7/16"	1"
1-1/8"	1-206-18-2	UC206-18	FL206	1/4"-28	1.221"	0.512"	1.583"	3.150"	4.606"	5.827"	7/16"	1-1/8"
1-3/16"	1-206-19-2	UC206-19	FL206	1/4"-28	1.221"	0.512"	1.583"	3.150"	4.606"	5.827"	7/16"	1-3/16"
1-1/4"	1-206-20-2	UC206-20	FL206	1/4"-28	1.221"	0.512"	1.583"	3.150"	4.606"	5.827"	7/16"	1-1/4"
1-1/4"	1-207-20-2	UC207-20	FL207	5/16"-24	1.339"	0.551"	1.748"	3.543"	5.118"	6.339"	1/2"	1-1/4"
1-5/16"	1-207-21-2	UC207-21	FL207	5/16"-24	1.339"	0.551"	1.748"	3.543"	5.118"	6.339"	1/2"	1-5/16"
1-3/8"	1-207-22-2	UC207-22	FL207	5/16"-24	1.339"	0.551"	1.748"	3.543"	5.118"	6.339"	1/2"	1-3/8"
1-7/16"	1-207-23-2	UC207-23	FL207	5/16"-24	1.339"	0.551"	1.748"	3.543"	5.118"	6.339"	1/2"	1-7/16"
1-1/2"	1-208-24-2	UC208-24	FL208	5/16"-24	1.417"	0.551"	2.016"	3.937"	5.669"	6.890"	1/2"	1-1/2"
1-5/8"	1-209-26-2	UC209-26	FL209	5/16"-24	1.496"	0.630"	2.055"	4.252"	5.827"	7.402"	9/16"	1-5/8"
1-11/16"	1-209-27-2	UC209-27	FL209	5/16"-24	1.496"	0.630"	2.055"	4.252"	5.827"	7.402"	9/16"	1-11/16"
1-3/4"	1-209-28-2	UC209-28	FL209	5/16"-24	1.496"	0.630"	2.055"	4.252"	5.827"	7.402"	9/16"	1-3/4"
1-7/8"	1-210-30-2	UC210-30	FL210	3/8"-24	1.575"	0.630"	2.150"	4.528"	6.181"	7.756"	9/16"	1-7/8"
1-15/16"	1-210-31-2	UC210-31	FL210	3/8"-24	1.575"	0.630"	2.150"	4.528"	6.181"	7.756"	9/16"	1-15/16"
2"	1-210-32-2	UC210-32	FL210	3/8"-24	1.575"	0.630"	2.150"	4.528"	6.181"	7.756"	9/16"	2"
2"	1-211-32-2	UC211-32	FL211	3/8"-24	1.693"	0.709"	2.299"	5.118"	7.244"	8.819"	5/8"	2"
2-1/8"	1-211-34-2	UC211-34	FL211	3/8"-24	1.693"	0.709"	2.299"	5.118"	7.244"	8.819"	5/8"	2-1/8"
2-3/16"	1-211-35-2	UC211-35	FL211	3/8"-24	1.693"	0.709"	2.299"	5.118"	7.244"	8.819"	5/8"	2-3/16"
2-1/4"	1-212-36-2	UC212-36	FL212	3/8"-24	1.890"	0.709"	2.704"	5.512"	7.953"	9.843"	5/8"	2-1/4"
2-3/8"	1-212-38-2	UC212-38	FL212	3/8"-24	1.890"	0.709"	2.704"	5.512"	7.953"	9.843"	5/8"	2-3/8"
2-7/16"	1-212-39-2	UC212-39	FL212	3/8"-24	1.890"	0.709"	2.704"	5.512"	7.953"	9.843"	5/8"	2-7/16"
2-1/2"	1-213-40-2	UC213-40	FL213	3/8"-24	1.969"	0.787"	2.744"	6.102"	8.268"	10.158"	3/4"	2-1/2"
2-3/4"	1-214-44-2	UC214-44	FL214	7/16"-20	2.126"	0.787"	2.968"	6.299"	8.504"	10.433"	3/4"	2-3/4"
2-15/16"	1-215-47-2	UC215-47	FL215	7/16"-20	2.205"	0.787"	3.093"	6.496"	8.858"	10.827"	3/4"	2-15/16"
3"	1-215-48-2	UC215-48	FL215	7/16"-20	2.205"	0.787"	3.093"	6.496"	8.858"	10.827"	3/4"	3"

Bearing Series	Load Ratings												
	Radial load in pounds at various RPM based on 500 hours minimum life.												
	33-1/3 RPM	50 RPM	100 RPM	200 RPM	300 RPM	500 RPM	900 RPM	1,200 RPM	1,500 RPM	1,800 RPM	2,400 RPM	3,600 RPM	5,000 RPM
UC201	2,226	1,940	1,540	1,220	1,070	900	740	670	630	590	540	467	420
UC202	2,226	1,940	1,540	1,220	1,070	900	740	670	630	590	540	467	420
UC204	2,226	1,940	1,540	1,220	1,070	900	740	670	630	590	540	467	420
UC205	2,420	2,120	1,680	1,330	1,170	985	810	730	680	640	580	510	456
UC206	3,370	2,960	2,340	1,860	1,620	1,370	1,120	1,020	950	890	810	710	—
UC207	4,450	3,880	3,090	2,450	2,200	1,810	1,260	1,350	1,250	1,170	1,070	935	—
UC208	5,030	4,390	3,500	2,760	2,430	2,040	1,680	1,520	1,410	1,330	1,210	—	—
UC209	5,660	4,960	3,730	3,110	2,730	2,300	1,950	1,720	1,590	1,500	1,360	—	—
UC210	6,020	5,250	4,170	3,310	2,890	2,440	2,180	1,820	1,690	1,590	1,440	—	—
UC211	7,450	6,500	5,160	4,100	3,580	3,020	2,480	2,260	2,000	1,970	1,790	—	—
UC212	8,990	7,850	6,230	4,950	4,320	3,640	3,000	2,720	2,530	2,070	—	—	—
UC213	9,833	8,580	6,840	5,410	4,720	3,980	3,280	2,980	2,760	2,595	—	—	—
UC214	10,690	9,330	7,410	5,780	5,130	4,330	3,570	3,240	3,005	2,820	—	—	—
UC215	11,440	9,970	7,930	6,920	5,490	4,630	3,810	3,470	3,210	3,020	—	—	—

NOTE: The values in the table above are based on the insert bearing mounted in the housing.

Set Screw Torque - Set screws should be tightened evenly on the shaft until both are snug. Then each set screw should be further tightened to the torque value within the appropriate limits specified in the following table.

Set Screw Torque Limits

Set Screw Size	Torque Limit (in-lbs.)	
	Minimum	Maximum
10-32	20	22
1/4"-28	31	35
5/16"-28	70	74
3/8"-24	138	143
7/16"-20	200	210

CAUTION: Do not over tighten set screws.