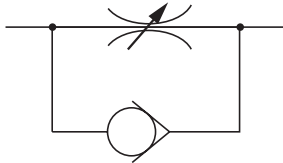


SPEED CONTROLLERS TSC SERIES

10-32 UNF, With Clamp Fitting

- Compact and lightweight, optimum for Pen Cylinders and Jig Cylinders.
- Wide variation of products allows mounting in any direction.
- Straight type and L type offer a choice of piping directions.

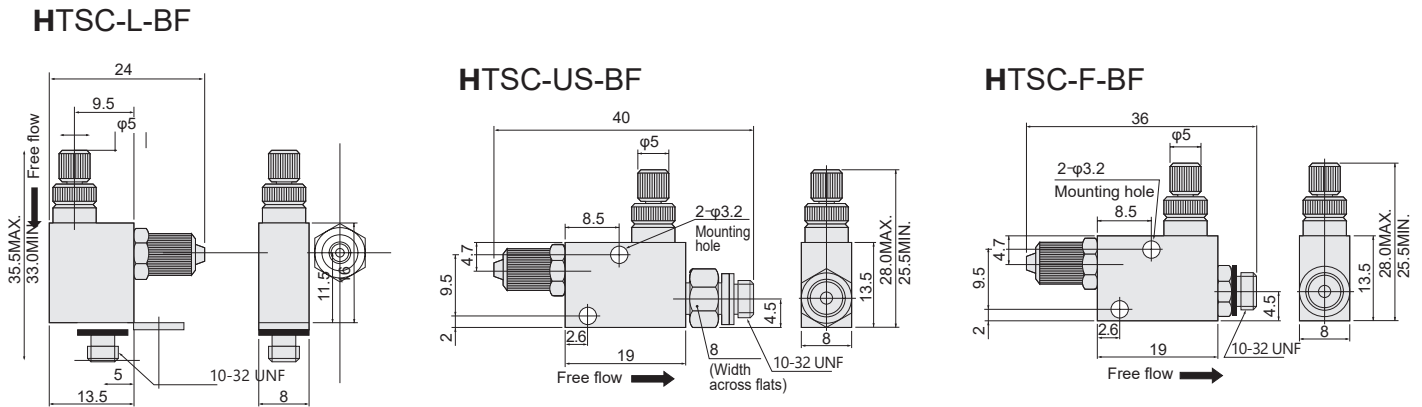
Symbol



Specifications

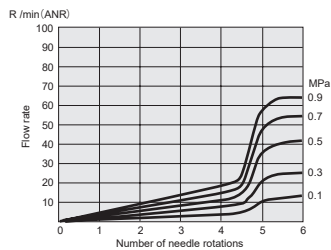
Item	Model		HTSC-F-BF		HTSC-US-BF		HTSC-L-BF
Piping type and port size	Controlled flow P		Male thread 10-32 UNF		Union male thread 10-32 UNF		Male thread 10-32 UNF
	Controlled flow A		For urethane tube $\phi 4 \times 2.5$ Clamp fitting		For urethane tube $\phi 4 \times 2.5$ Clamp fitting		For urethane tube $\phi 4 \times 2.5$ Clamp fitting
Media		Air					
Operating pressure range	MPa [psi.]	0~0.9 [0~131]					
Proof pressure	MPa [psi.]	1.32 [191]					
Cracking pressure	MPa [psi.]	0.05 [7.3]					
Operating temperature range	°C [°F]	5~60 [41~140]					
Mass	g [oz.]		20.5 [0.72]		21.5 [0.76]		17 [0.60]

Dimensions (mm)



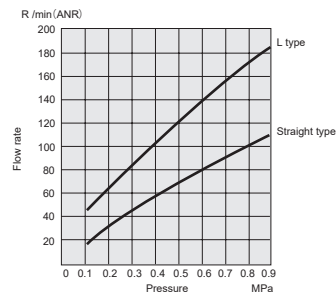
Flow Rate Characteristics

Controlled flow

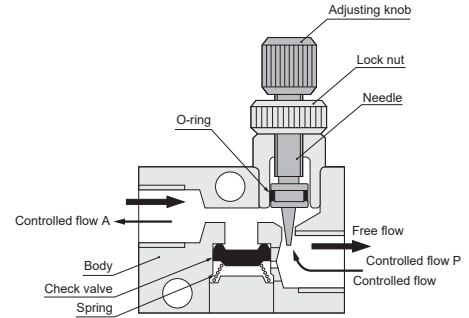


/min = 0.0353ft³/min.

Free flow



Inner Construction and Major Parts



Major Parts and Materials

Parts	Materials
Body	Brass (nickel plated)
Needle	Stainless steel
Lock nut	Brass (nickel plated)
Check valve	
O-ring	Synthetic rubber (NBR)
Adjusting knob	Brass (nickel plated)