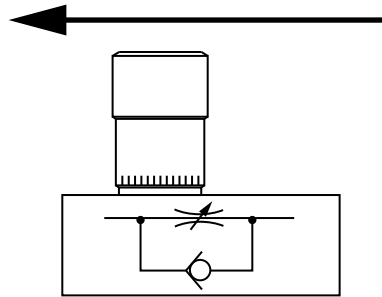


Flow in this direction is restricted.



Flow in this direction is unrestricted.



In-Line Flow Control Valves



FEATURES:

- Carbon steel body
- Designed to provide precision flow control & shut off in one flow direction & provide free flow in the opposite direction
- Color bands allow fast return to a previous setting
- Set screw locks valve to any setting
- Operating temp range -20°F through 210°F

SURPLUS CENTER ITEM #	MODEL NO.	MAX FLOW	MAX PSI	A	B	C	D	E	F	G	H
9-7960-4	WFC-400	5 GPM	5,000 PSI	1/4 NPTF	1.79	1.59	2.62	1.66	.81	.41	.811
9-7960-6	WFC-600	8 GPM	5,000 PSI	3/8 NPTF	2.18	1.94	2.75	1.75	1	.5	1
9-7960-8	WFC-800	15 GPM	5,000 PSI	1/2 NPTF	2.70	2.42	3.44	2.23	1.25	.63	1.19
9-7960-12	WFC-1200	25 GPM	3,000 PSI	3/4 NPTF	3.38	2.81	3.88	2.58	1.5	.75	1.38
9-7960-16	WFC-1600	40 GPM	3,000 PSI	1 NPTF	4.87	4.21	5	3.22	1.75	.88	1.88

