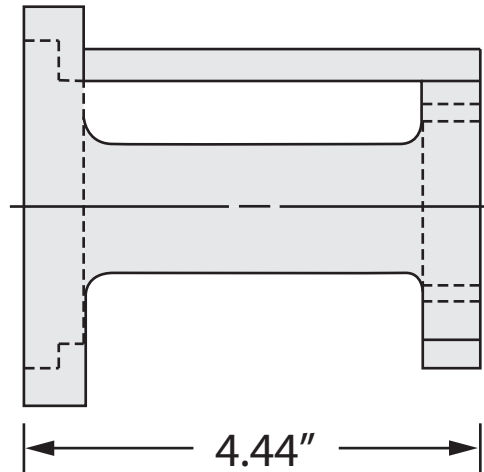


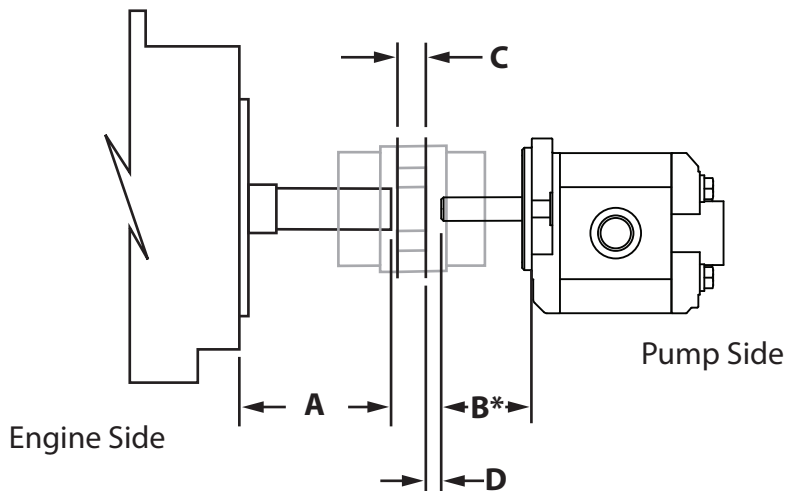
PUMP END



Face-To-Face Length

PUMP MOUNT FACE-TO-FACE LENGTH = A + B + C + D

Be sure coupling hub bore length is not longer than pump shaft.



A - Engine shaft length including pilot depth to engine block.

B* - Pump shaft length including pilot depth to pump flange mounting face (In some applications this can be coupling hub bore length if pump shaft is short).

C - Width of flexible coupling insert.

D - Clearance as required, normally $\frac{1}{16}$ " to $\frac{1}{2}$ "

Note:

If shaft and coupling stack up does not provide for "D" clearance, consideration should be made to shorten engine shaft or select a shaft coupling with thru hole in insert for shaft clearance.

⚠ Safety Note:

In locations where coupling access is not covered or where body, loose clothing, or equipment may be exposed to rotating coupling, this cover must be used.

