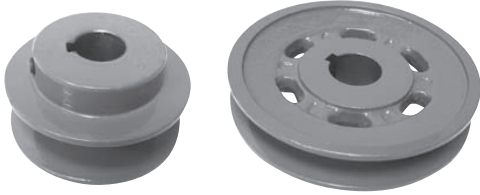
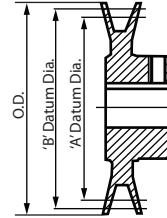


FOR 4L OR A (1/2") BELTS & 5L OR B (5/8") BELTS



Outside and Datum Diameters

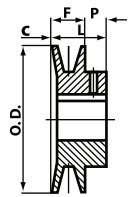
These pulleys accept both 'A' (1/2") belts or 'B' (5/8") belts. The outside diameter is measured at the outside of pulley. The datum diameters are an industry standard reference point used for calculations such as center distance and belt length. The datum system replaces the pitch system for classical belts and pulleys to compensate for differences in manufacturers construction of belts.



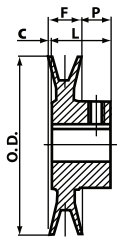
Bore Range	Keyseat
1/2"	None
5/8" to 7/8"	3/16" x 3/32"
15/16" to 1 3/8"	1/4" x 1/8"
1 7/16"	3/8" x 3/16"

SINGLE GROOVE SHEAVES - FINISHED BORE

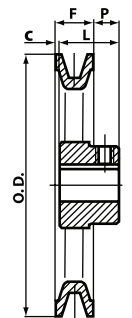
Item #	Diameters			Type	Bore Size										Dimensions			
	Outside	Datum "A"	Datum "B"		1/2"	5/8"	3/4"	7/8"	1"	1 1/8"	1 3/16"	1 1/4"	1 3/8"	1 7/16"	F	L	P	C
1-BK24	2.40"	1.80"	2.20"	1	A	B	C	-	-	-	-	-	-	-	13/16"	1 1/16"	13/32"	5/32"
1-BK25	2.50"	1.90"	2.30"	1	A	B	C	D	-	-	-	-	-	-	13/16"	1 1/16"	13/32"	5/32"
1-BK26	2.60"	2.00"	2.40"	1	A	B	C	D	-	-	-	-	-	-	13/16"	1 1/16"	13/32"	5/32"
1-BK27	2.70"	2.10"	2.50"	2	A	B	C	D	-	-	-	-	-	-	13/16"	1 1/16"	13/32"	5/32"
1-BK28	2.95"	2.20"	2.60"	2	A	B	C	D	-	-	-	-	-	-	13/16"	1 1/16"	13/32"	5/32"
1-BK30	3.15"	2.40"	2.80"	2	A	B	C	D	-	-	-	-	-	-	13/16"	1 1/16"	13/32"	5/32"
1-BK32	3.35"	2.60"	3.00"	2	A	B	C	D	-	-	-	-	-	-	13/16"	1 1/16"	13/32"	5/32"
1-BK34	3.55"	2.80"	3.20"	2	A	B	C	D	E	F	-	-	-	-	7/8"	1 5/32"	13/32"	1/8"
1-BK36	3.75"	3.00"	3.40"	2	A	B	C	D	E	F	-	-	-	-	7/8"	1 5/32"	13/32"	1/8"
1-BK40	3.95"	3.20"	3.60"	2	A	B	C	D	E	F	-	-	-	-	7/8"	1 5/32"	13/32"	1/8"
1-BK45	4.25"	3.50"	3.90"	2	A	B	C	D	E	F	-	-	-	-	7/8"	1 5/32"	13/32"	1/8"
1-BK47	4.45"	3.70"	4.10"	2	A	B	C	D	E	F	-	-	-	-	7/8"	1 5/32"	13/32"	1/8"
1-BK50	4.75"	4.00"	4.40"	3	A	B	C	D	E	F	-	-	-	-	7/8"	1 5/32"	13/32"	1/8"
1-BK52	4.95"	4.20"	4.60"	3	A	B	C	D	E	F	-	-	-	-	7/8"	1 5/32"	13/32"	1/8"
1-BK55	5.25"	4.50"	4.90"	3	A	B	C	D	E	F	G	-	-	-	7/8"	1 5/32"	13/32"	1/8"
1-BK57	5.45"	4.70"	5.10"	3	-	B	C	D	E	F	-	-	-	-	7/8"	1 5/32"	13/32"	1/8"
1-BK60	5.75"	5.00"	5.40"	3	A	B	C	D	E	F	G	-	-	-	7/8"	1 5/32"	13/32"	1/8"
1-BK62	5.95"	5.20"	5.60"	3	A	B	C	D	E	F	G	-	-	-	7/8"	1 5/32"	13/32"	1/8"
1-BK65	6.25"	5.50"	5.90"	3	-	B	C	-	E	F	-	-	-	-	7/8"	1 5/32"	13/32"	1/8"
1-BK67	6.45"	5.70"	6.10"	3	-	B	C	-	E	F	-	-	-	-	7/8"	1 5/32"	13/32"	1/8"
1-BK70	6.75"	6.00"	6.40"	3	-	B	C	-	E	F	G	-	-	J	7/8"	1 15/32"	21/32"	1/16"
1-BK72	6.95"	6.20"	6.60"	3	-	-	C	-	E	F	-	-	I	-	7/8"	1 15/32"	21/32"	1/16"
1-BK75	7.25"	6.50"	6.90"	3	-	-	C	-	E	F	-	-	I	-	7/8"	1 15/32"	21/32"	1/16"
1-BK77	7.45"	6.70"	7.10"	3	-	-	C	-	E	F	-	-	I	-	7/8"	1 15/32"	21/32"	1/16"
1-BK80	7.75"	7.00"	7.40"	3	-	B	C	D	E	F	G	H	I	J	7/8"	1 15/32"	21/32"	1/16"
1-BK85	8.25"	7.50"	7.90"	3	-	-	C	D	E	F	-	-	I	J	7/8"	1 15/32"	21/32"	1/16"
1-BK90	8.75"	8.00"	8.40"	3	-	-	C	-	E	F	G	-	I	J	7/8"	1 15/32"	21/32"	1/16"
1-BK95	9.25"	8.50"	8.90"	3	-	-	C	D	E	F	-	-	I	J	7/8"	1 15/32"	21/32"	1/16"
1-BK100	9.75"	9.00"	9.40"	3	-	-	C	-	E	F	G	H	I	J	7/8"	1 15/32"	21/32"	1/16"
1-BK105	10.25"	9.50"	9.90"	3	-	-	-	-	E	-	-	-	I	J	7/8"	1 15/32"	21/32"	1/16"
1-BK110	10.75"	10.00"	10.40"	3	-	-	C	-	E	F	G	-	I	J	7/8"	1 15/32"	21/32"	1/16"
1-BK115	11.25"	10.50"	10.90"	3	-	-	-	-	E	-	-	-	I	J	7/8"	1 15/32"	21/32"	1/16"
1-BK120	11.75"	11.00"	11.40"	3	-	-	C	-	E	-	G	-	I	J	7/8"	1 15/32"	21/32"	1/16"
1-BK130	12.75"	12.00"	12.40"	3	-	-	C	-	E	F	G	H	-	J	7/8"	1 15/32"	21/32"	1/16"
1-BK140	13.75"	13.00"	13.40"	3	-	-	C	-	E	-	G	-	-	J	7/8"	1 15/32"	21/32"	1/16"
1-BK160	15.75"	15.00"	15.40"	3	-	-	-	-	E	F	G	H	-	J	7/8"	1 15/32"	21/32"	1/16"
1-BK190	18.75"	18.00"	18.40"	3	-	-	-	-	E	-	G	H	-	J	7/8"	1 15/32"	21/32"	1/16"



TYPE 1



TYPE 2



TYPE 3