

1 2 3 4 5 6 7

A

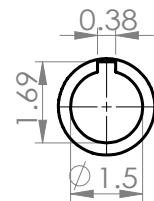
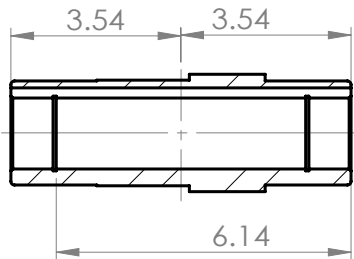
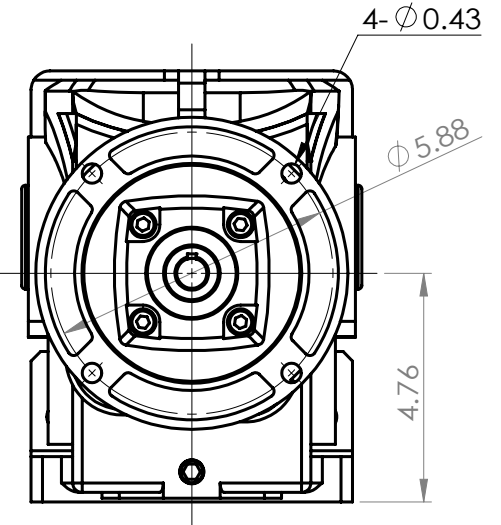
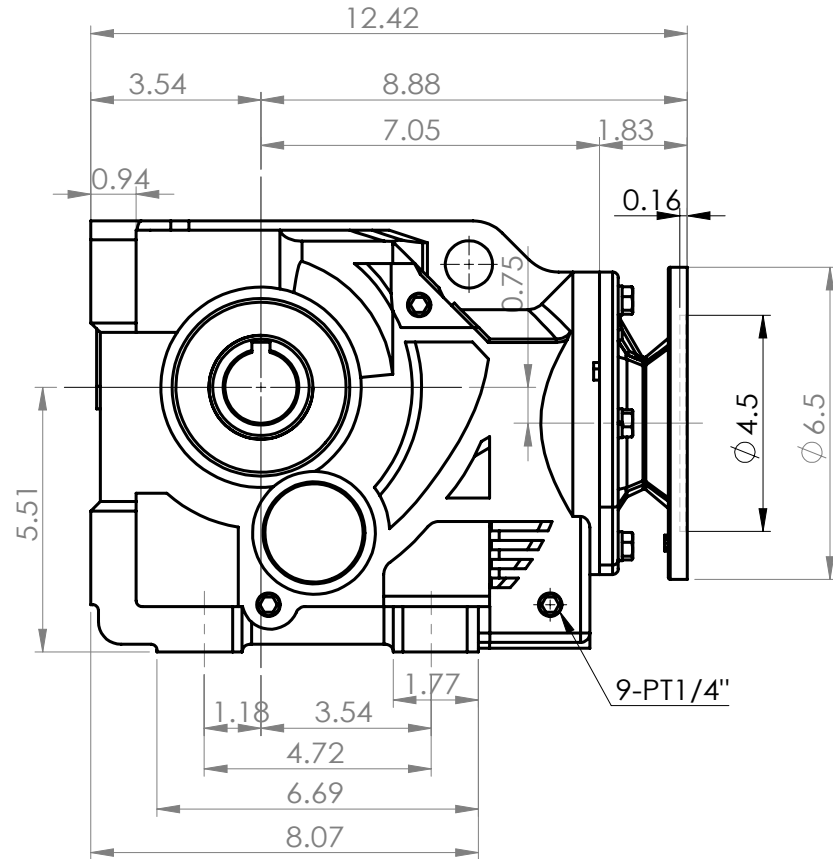
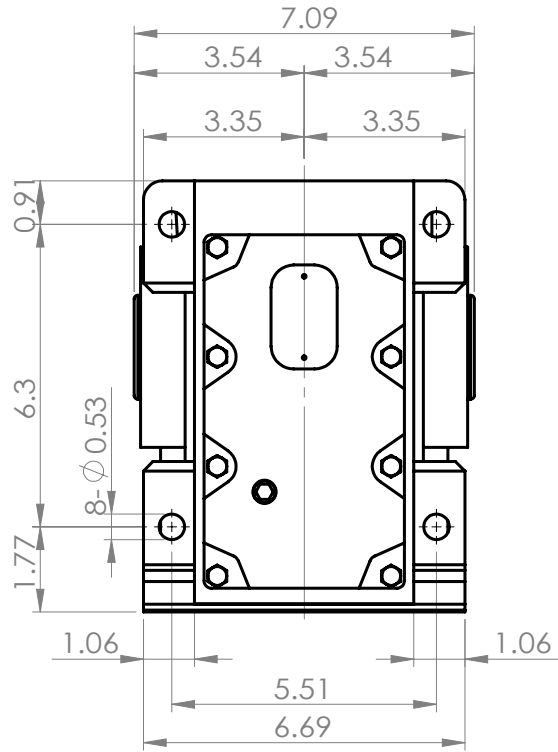
B

C

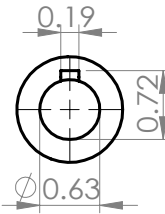
D

E

F



OUTPUT BORE



INPUT BORE

NO.	PART NO.	MATERIAL	PC	RAW MATERIAL	WEIGHT	NOTE
		SCABBLE TOLERANCE				
>0	± 0.1	DWG. 2012.10.25		Y.S.P		
>6	± 0.2	DESN. 2012.10.25		Y.S.P		
>30	± 0.3	APPR.				
>120	± 0.5	DATE		NAME		
>315	± 0.8	NO-MACHINING		TITLE		
		MACHINING REQUIRED		KHN67-H-56C		
		NO-MACHINING		DWG. NO.		
		▽ 50S		BKHFO67		
		▽▽ 25S		REV.		
		▽▽▽ 6S		A		
		ANG. TOLERANCE ±0.5				
		SCALE 1:4				

**WORLD WIDE**

NO. SECTION ORIGIN MODIFICATION DATE IN CHARGE

1 2 3 4 5 6 7

A

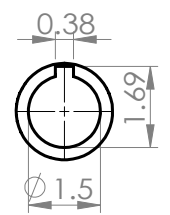
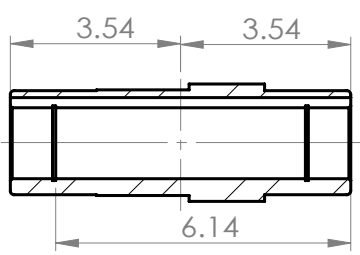
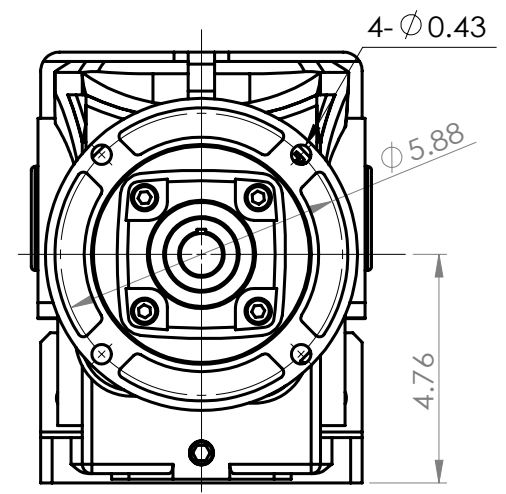
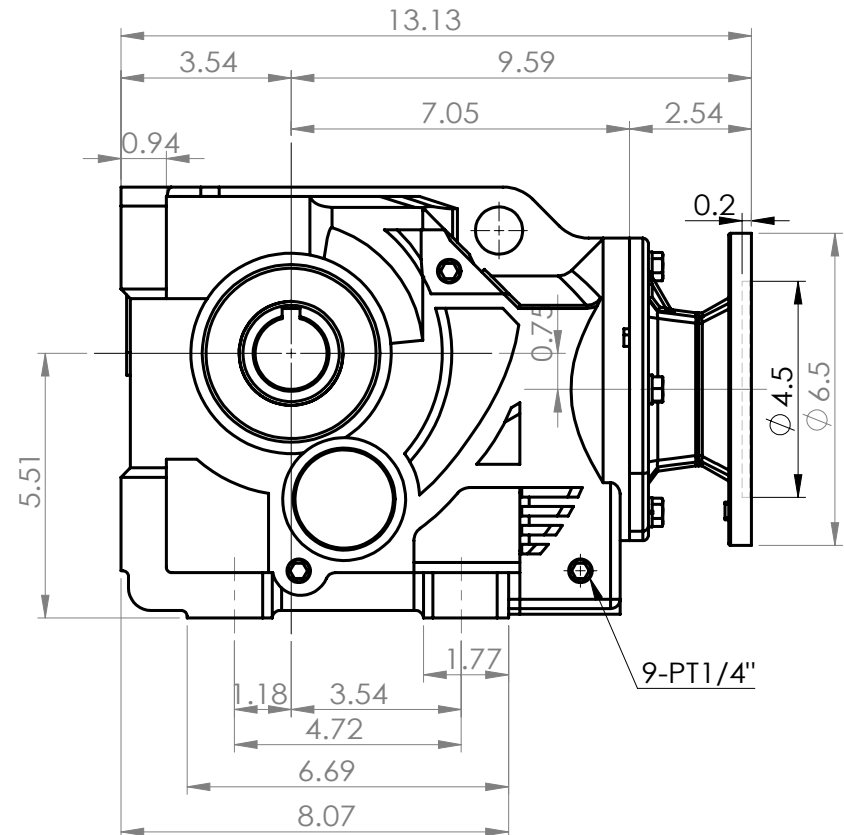
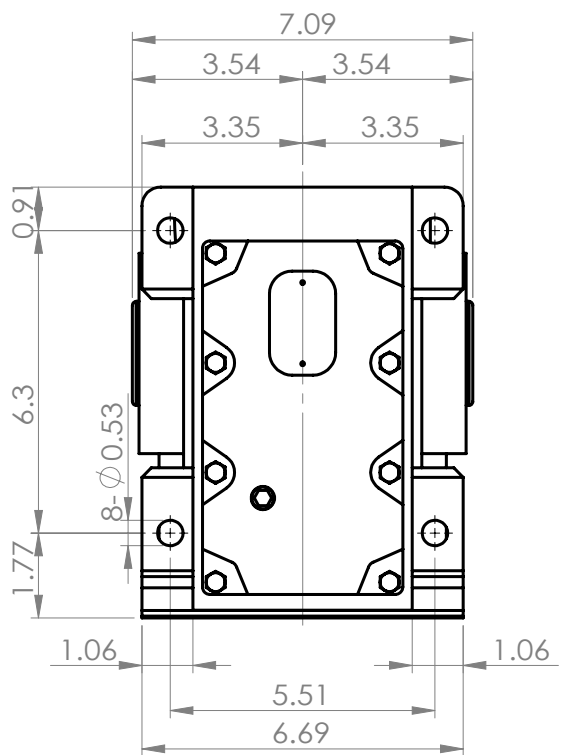
B

C

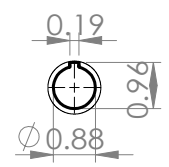
D

E

F



OUTPUT BORE



INPUT BORE

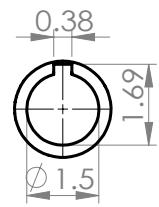
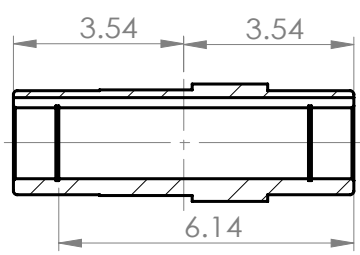
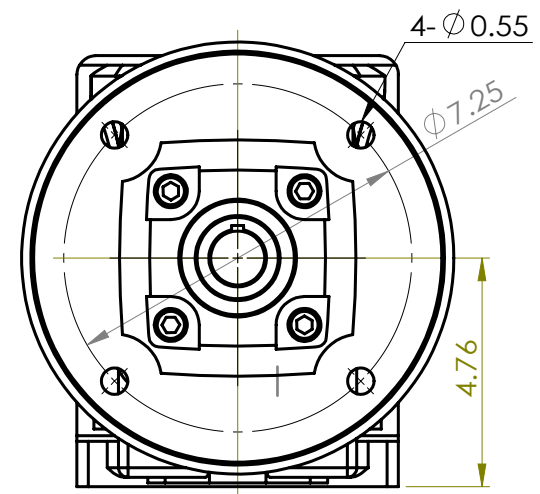
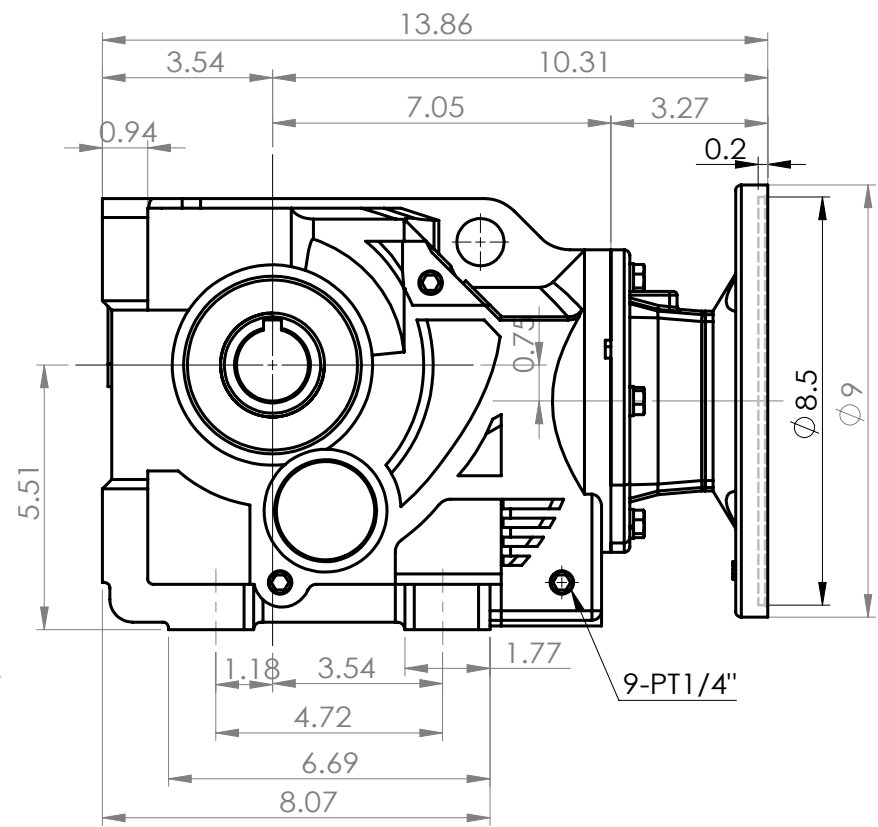
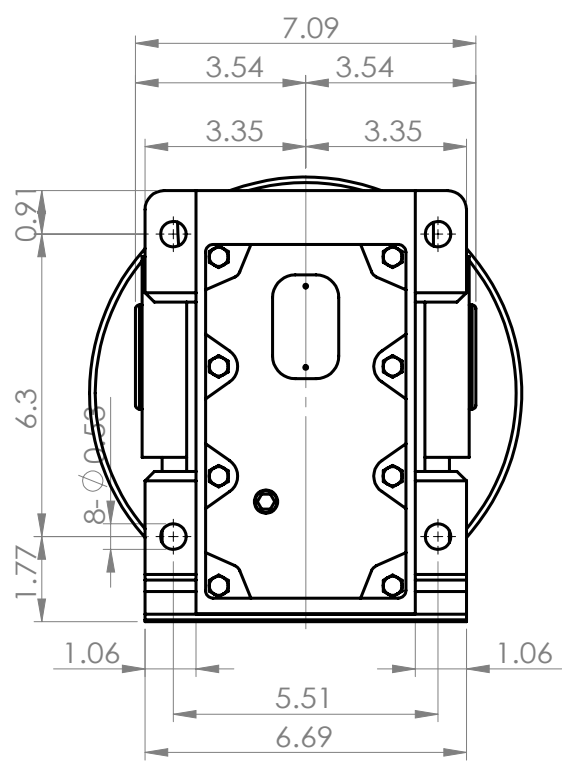
NO.	PART NO.	MATERIAL	PC	RAW MATERIAL	WEIGHT	NOTE
		SCABBLE TOLERANCE				
>0	± 0.1	DWG. 2012.10.25		Y.S.P		
>6	± 0.2	DESN. 2012.10.25		Y.S.P		
>30	± 0.3	APPR.				
>120	± 0.5					
>315	± 0.8					
		MACHINING REQUIRED				
~	NO-MACHINING	DATE		NAME		
▽	50S			TITLE		
▽▽	25S			KHN67-H-143/5TC		
▽▽▽	6S					
ANG. TOLERANCE ±0.5		SCALE	1:4	DWG. NO.	BKHF067	REV.

**WORLD WIDE**

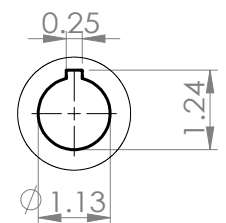
NO.	SECTION	ORIGIN	MODIFICATION	DATE	IN CHARGE

A  
B  
C  
D  
E  
F

1 2 3 4 5 6 7



OUTPUT BORE



INPUT BORE

NO.	PART NO.	MATERIAL	PC	RAW MATERIAL	WEIGHT	NOTE
SCABBLE TOLERANCE						
>0	± 0.1	DWG.	2012.10.25	Y.S.P	<b>WORLD WIDE</b>	
>6	± 0.2	DES.N.	2012.10.25	Y.S.P		
>30	± 0.3	APPR.				
>120	± 0.5					
>315	± 0.8					
MACHINING REQUIRED		DATE	NAME	TITLE	KHN67-H-182/4TC	
~	NO-MACHINING	SCALE	1:4	DWG. NO.	BKHF067	REV.
▽	50S					
▽▽	25S					
▽▽▽	6S					
ANG. TOLERANCE ± 0.5						

NO.	SECTION	ORIGIN	MODIFICATION	DATE	IN CHARGE