

1 2 3 4 5 6 7

A

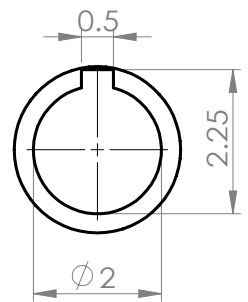
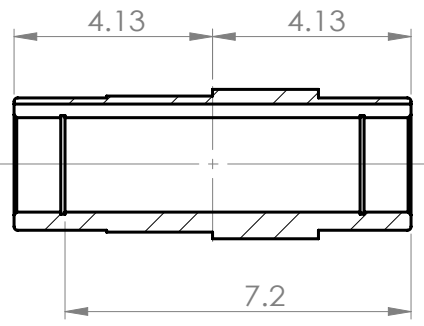
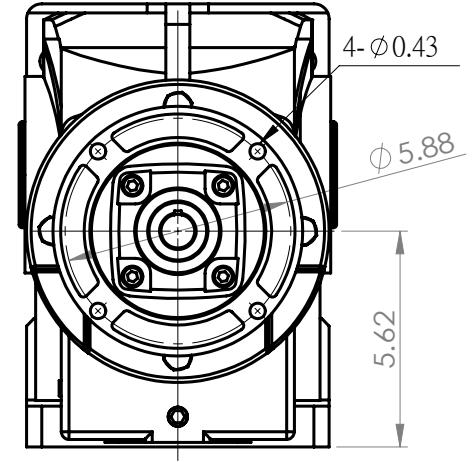
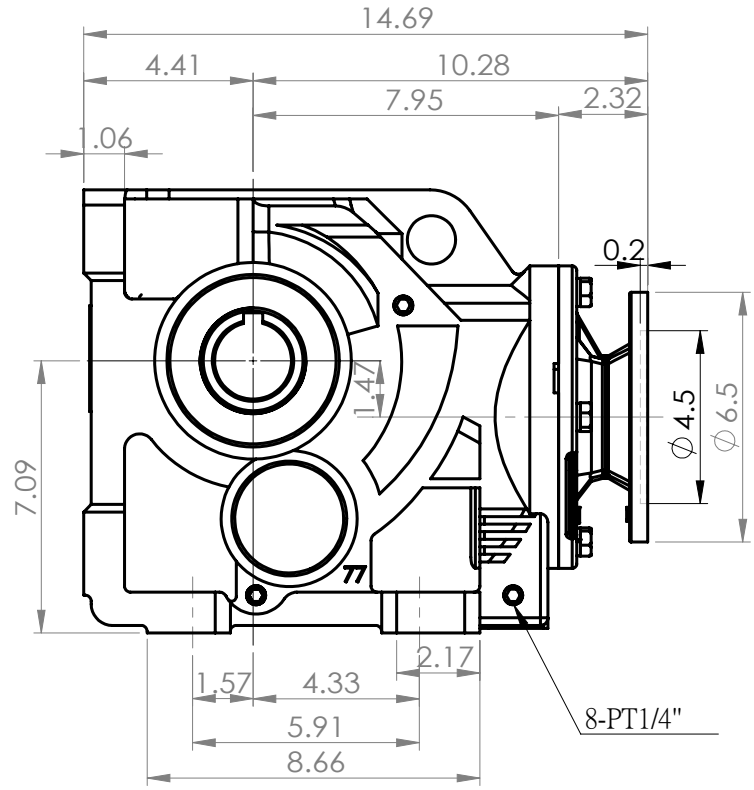
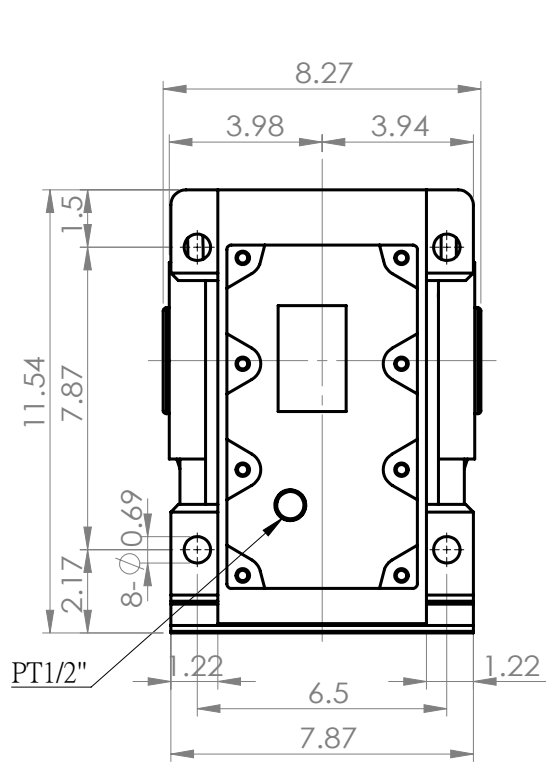
B

C

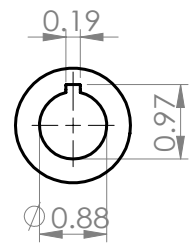
D

E

F



OUTPUT BORE



INPUT BORE

NO.	PART NO.	MATERIAL	PC	RAW MATERIAL	WEIGHT	NOTE
	DWG.	2012.10.25	Y.S.P	WORLD WIDE		
	DESN.	2012.10.25	Y.S.P			
	APPR.					
		DATE	NAME	TITLE	KHN77-H-143/5TC	
		SCALE	1:5	DWG. NO.	BKHF77	REV. A

NO.	SECTION	ORIGIN	MODIFICATION	DATE	IN CHARGE

SCABBLE TOLERANCE
 >0 ± 0.1
 >6 ± 0.2
 >30 ± 0.3
 >120 ± 0.5
 >315 ± 0.8
 MACHINING REQUIRED
 ~ NO-MACHINING
 ∇ 50S
 ∇∇ 25S
 ∇∇∇ 6S
 ANG. TOLERANCE±0.5

1 2 3 4 5 6 7

A

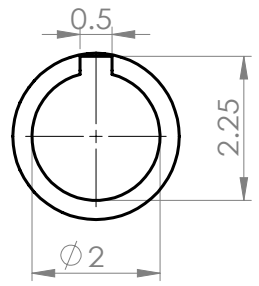
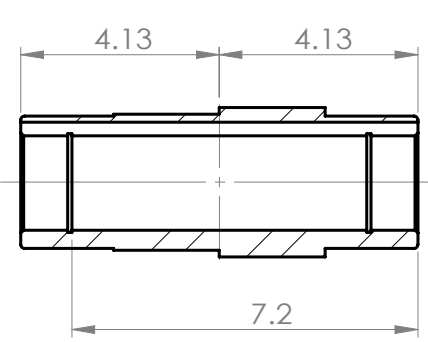
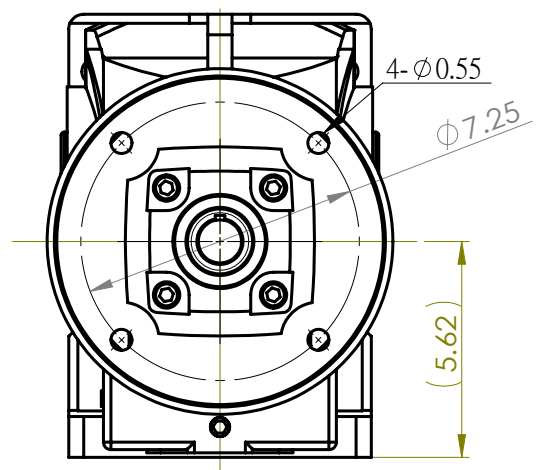
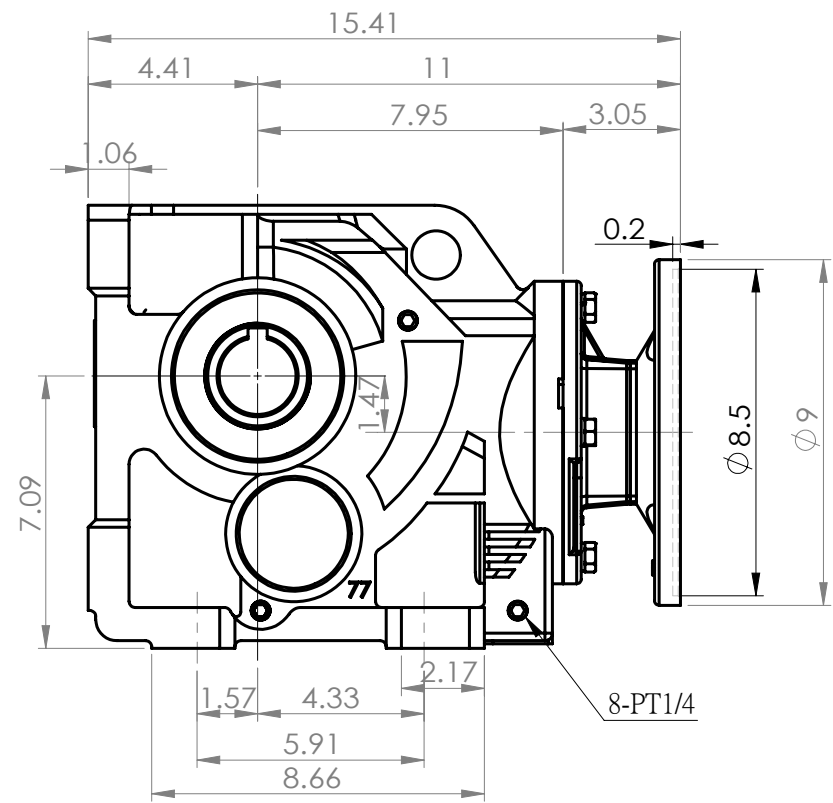
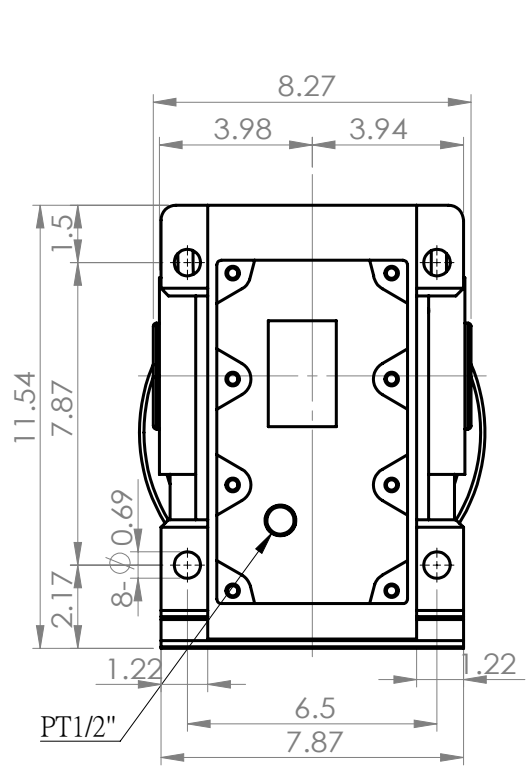
B

C

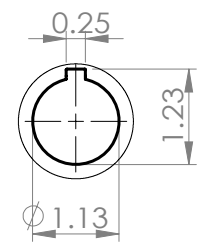
D

E

F



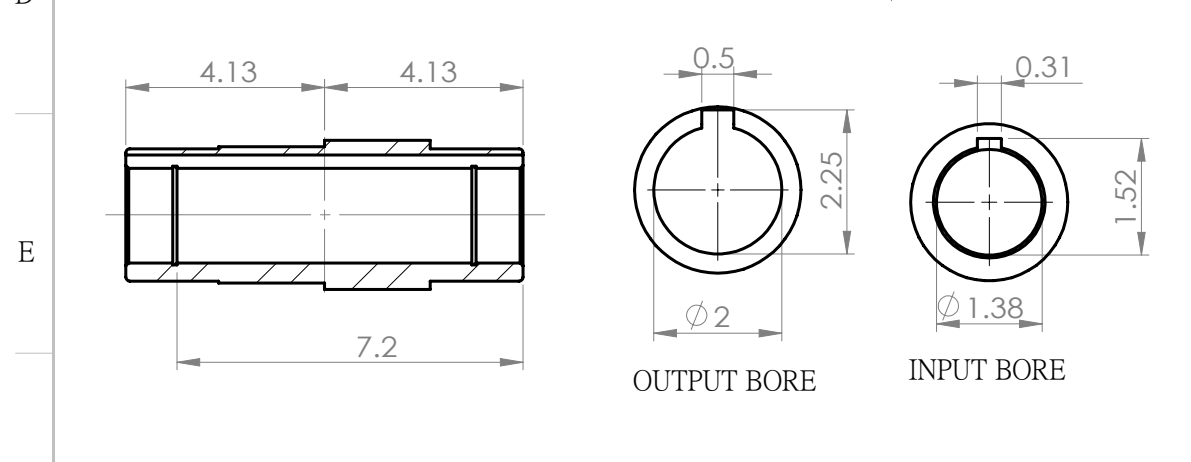
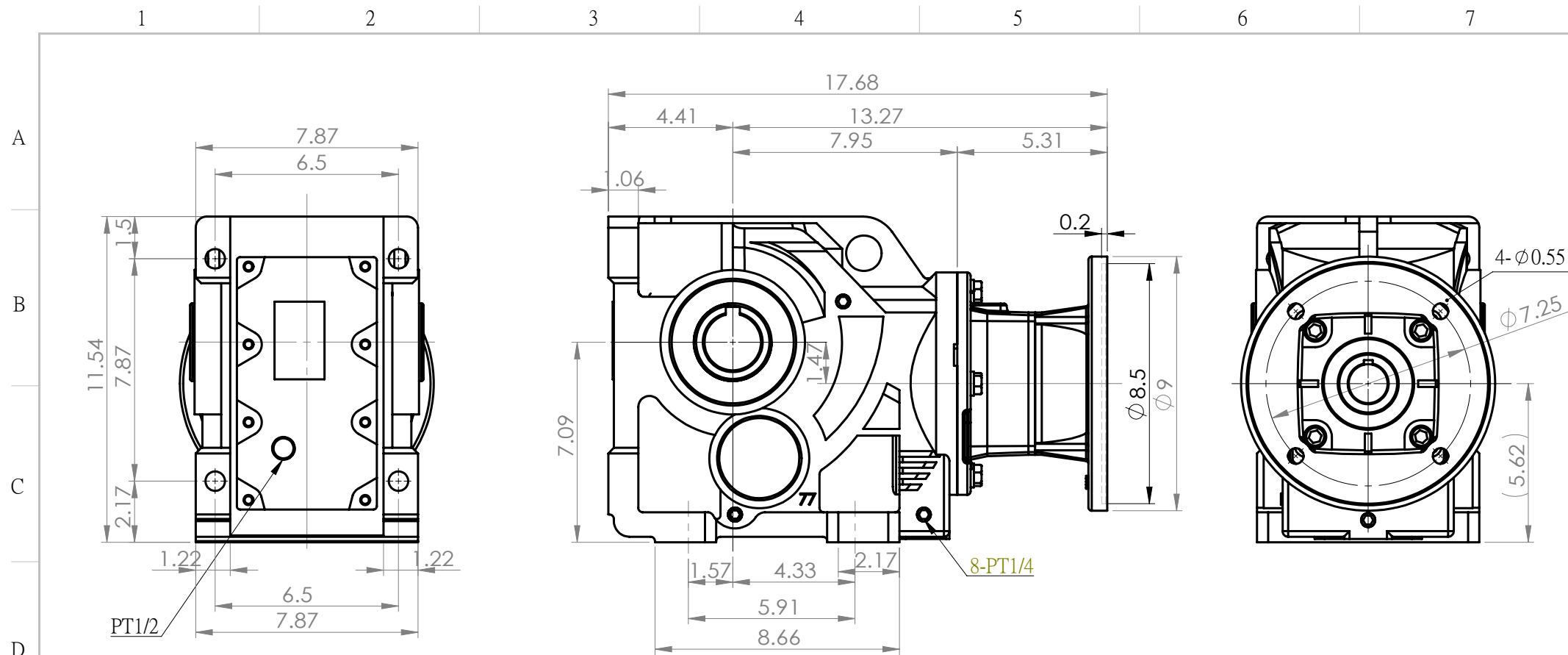
OUTPUT BORE



INPUT BORE

NO.	PART NO.	MATERIAL	PC	RAW MATERIAL	WEIGHT	NOTE
SCABBLE TOLERANCE						
>0	± 0.1	DWG.	2012.10.25	Y.S.P	WORLD WIDE	
>6	± 0.2	DESN.	2012.10.25	Y.S.P		
>30	± 0.3	APPR.				
>120	± 0.5					
>315	± 0.8					
MACHINING REQUIRED		DATE	NAME	TITLE	KHN77-H-182/4TC	
~	NO-MACHINING	SCALE	1:5	DWG. NO.	BKHF77	REV.
▽	50S					
▽▽	25S					
▽▽▽	6S					
ANG. TOLERANCE ±0.5						

NO.	SECTION	ORIGIN	MODIFICATION	DATE	IN CHARGE



NO.	PART NO.	MATERIAL	PC	RAW MATERIAL	WEIGHT	NOTE
	DWG.	2012.10.25	Y.S.P	WORLD WIDE		
	DESN.	2012.10.25	Y.S.P			
	APPR.					
		DATE	NAME	TITLE	KHN77-H-213/5TC	
		SCALE	1:5	DWG. NO.	BKHF77	REV.

NO.	SECTION	ORIGIN	MODIFICATION	DATE	IN CHARGE

SCABBLE TOLERANCE
>0 ±0.1
>6 ±0.2
>30 ±0.3
>120 ±0.5
>315 ±0.8

MACHINING REQUIRED
~ NO-MACHINING
▽ 50S
▽▽ 25S
▽▽▽ 6S
ANG. TOLERANCE±0.5