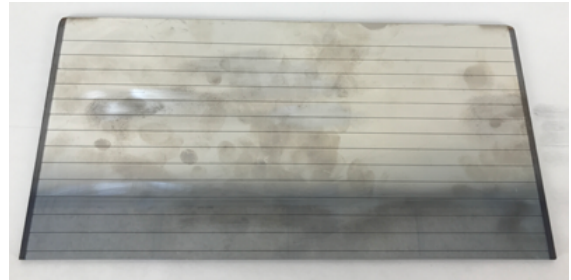




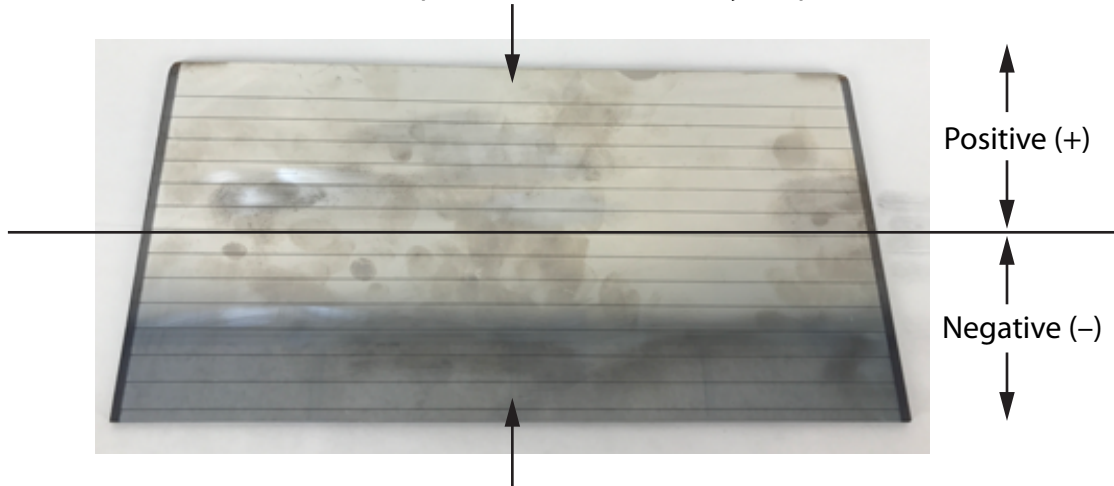
The dark side of the cell is the front (the side that faces the sun).



The shiny side of the cell is the back side. This is the side you will connect your wires to.

The polarity of the top half of the cell will be either positive or negative, and the bottom half of the cell will be the opposite. The example below shows positive on the top half of the solar cell with negative on the bottom half, but you will need to check with a voltmeter to determine it's polarity.

Connect a wire to the top section to be used as your positive (+) lead.



Connect a wire to the bottom section to be used as your negative (-) lead.

Use a scotch brite pad to lightly rough up the area that your wires will connect to. This will remove some of the coating on the solar cell to help achieve a good connection.

Connect your wires to any part of the shiny glass on the solar cell with a conductive adhesive.