

**DESCRIPTION**

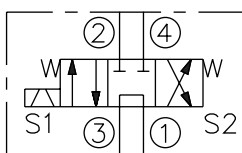
A solenoid-operated, 4-way, 3-position, direct-acting, spool-type, tandem center, screw-in hydraulic cartridge valve.

**OPERATION**

When de-energized, the **SV10-47A** blocks cylinder ports, while allowing flow from ③ to ①. When coil #1 is energized, flow is allowed from ③ to ②, and from ④ to ①. When coil #2 is energized, flow is allowed from ③ to ④, and from ② to ①.

In circuits where work port flows are unequal due to cylinder ratios, the higher return flow should be directed to port ②.

**While ① may be fully pressurized, it is not intended for use as the valve's inlet.**



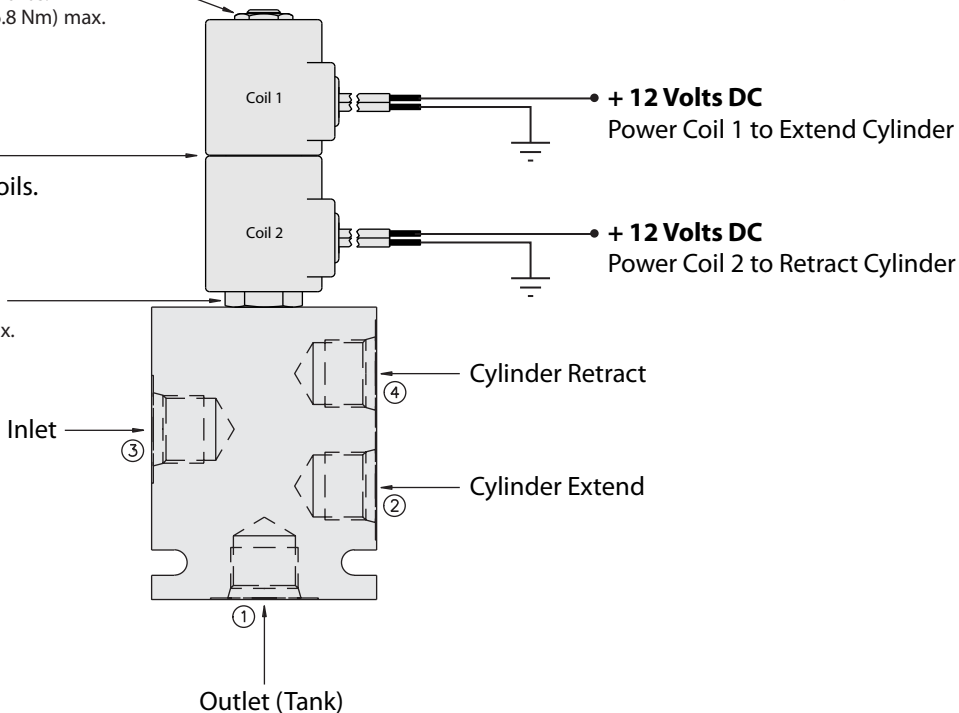
**Important:**  
**Do not overtorque.**

TORQUE:  
5 ft-lbs.  
(6.8 Nm) max.

**A good ground connection  
is required for the valve to  
function properly.**

A spacer ring is included with the cartridge. Place it in-between the coils.

TORQUE:  
25 ft-lbs.  
(33.9 Nm) max.



## If Using This Valve To Control A Single Acting Cylinder

Port 3 is the Inlet

Connect Port 2 to the port on the cylinder

Install a Tee fitting on Port 1

Connect a hydraulic line between Port 4 and one port of the Tee fitting

The 3rd port of the Tee fitting is where the tank line is now connected.

