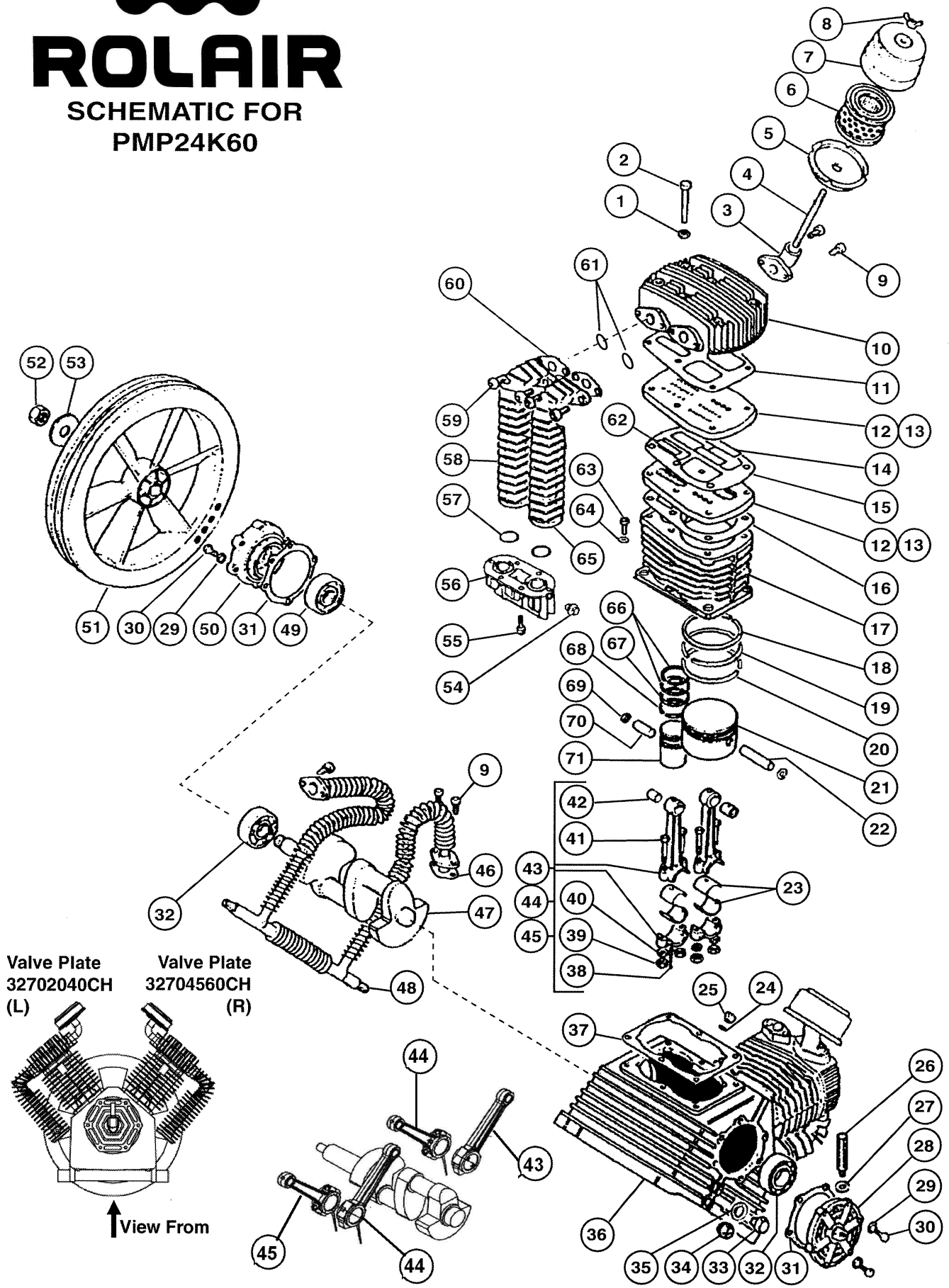


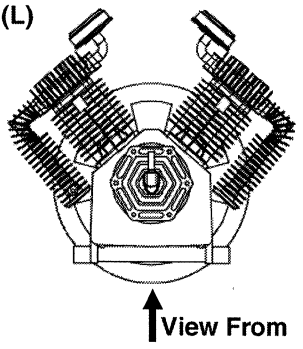
# ROLAIR

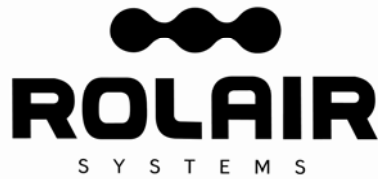
SCHEMATIC FOR  
PMP24K60



Valve Plate  
32702040CH  
(L)

Valve Plate  
32704560CH  
(R)





**PARTS LIST FOR PMP24K60**

Schem #	Description	Part #	Qty.	Schem. #	Description	Part #	Qty.
1	Washer	37502320CH	12	39	Nut	37402590CH	8
2	Bolt	37308060CH	12	40	Washer	17500230CH	8
3	Elbow	35604400CH	2	41	Bolt	37304380CH	8
4	Tension Rod	37301410CH	2	42	Bushing*	31102250CH	4
5	Filter Base	35602360CH	2	43	Connecting Rod w/Upper Bushing #4	31104480CH	1
6	Filter Element	35602380CH	2				
7	Filter Cover	35602350CH	2	44	Connecting Rod w/Upper Bushing #2 & #3	31104500CH	2
8	Wing Nut	37400450CH	2				
9	Bolt	37302470CH	8	45	Connecting Rod w/Upper Bushing- #1	31104490CH	1
10	Head	31304500CH	2	46	Gasket	30502330CH	2
11	Gasket	30502270CH	2	47	Crankshaft	30204310CH	1
12	Valve Plate - Left Bank	32702040CH	2	48	Aftercooler	32909100CH	1
13	Valve Plate - Right Bank	32704560CH	2	49	Oil Seal	30303730CH	1
				50	Bearing Carrier	30404320CH	1
14	Valve	32702400CH	8	51	Flywheel - 17.72"	31004050CH	1
15	Gasket	30502280CH	2		Flywheel - 21.65"	31003760CH	1
16	Gasket	30502290CH	2	52	Nut	37403780CH	1
17	Cylinder	31602020CH	2	53	Washer	37503770CH	1
18	Ring - LP	31202160CH	2	54	Plug	36506800CH	2
19	Ring - LP	31202170CH	2	55	Bolt	37302480CH	12
20	Ring - LP	31202180CH	2	56	Connector	3690211ACH	2
21	Piston - LP	31202190CH	2	57	O-Ring	30502400CH	4
22	Piston Pin - LP	31202230CH	2	58	Left Intercooler	32902710CH	2
23	Bearing Shell	31104350CH	4	59	Bolt	37302530CH	8
24	Gasket	30504440CH	1	60	Gasket - used prior to 2/00	30502330CH	4
25	Plug	36504590CH	1	61	O-Ring	30502500CH	4
26	1/2" Breather/Oil Fill Plug	36507100CH	1	62	Valve - HP	32702390CH	4
				63	Bolt	37303620CH	12
27	1/2" - 3/8" Adaptor	16900511CH	1	64	Washer	37504220CH	12
28	Bearing Carrier	30404330CH	1	65	Right Intercooler	32902720CH	2
29	Washer	37508130CH	12	66	Ring - HP	31203390CH	4
30	Bolt	37304240CH	12	67	Ring - HP	31202200CH	2
31	Gasket	30503740CH	2	68	Ring - HP	31202210CH	2
32	Bearing	30303720CH	2	69	Snap Ring	37602260CH	8
33	Sight Gauge	36504450CH	1	70	Piston Pin - HP	31202240CH	2
34	Plug	BLSQPL0250	1	71	Piston - HP	31203050CH	2
35	Gasket	30504440CH	1		Ring Set	K60RINGS	1
36	Crankcase	33104300CH	1		Gasket Set	K60GASKETS	1
37	Gasket	30502300CH	2		Valve Plate Assy. - Left	6000VK60L	1
38	Dipper	37604340CH	2		Valve Plate Assy. - Right	6000VK60R	1

\*Bushing is not machined to fit piston pin if ordered separate from connecting rod.

