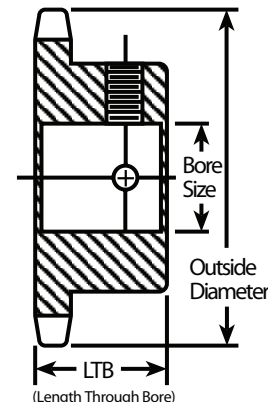


### Type BS (Bored to Size) Hardened Teeth - 2 Setscrews

- Black Oxide Finish
- Keyway is on center line of tooth
- Setscrews are on keyway and 90°
- Hub sizes vary to suit different bore sizes

Keyway Dimensions		
Bore Size	Keyway Width x Depth	Setscrew
1/2 - 9/16	1/8 X 1/16	10-24
5/8 - 7/8	3/16 X 3/32	1/4
15/16 - 1 1/4	1/4 X 1/8	5/16
1 5/16 - 1 3/8	5/16 X 5/32	5/16
1 7/16 - 1 3/4	3/8 X 3/16	3/8
1 13/16 - 2 1/4	1/2 X 1/4	1/2



### 60-1 FOR 3/4" PITCH ANSI CHAIN

Teeth No.	Item #	Outside Dia. (in.)	LTB (in.)	Hub Dia. (in.)	Finished Bores																
					3/4	7/8	1	1 1/8	1 3/16	1 1/4	1 3/8	1 7/16	1 1/2	1 5/8	1 3/4	1 7/8	1 15/16	2			
10	1-2125-10	2.76	1 1/4	1 15/16*	C	D	E	F	G	H											
11	1-2125-11	3.00	1 1/4	2 1/16*	C	D	E	F	G	H											
12	1-2125-12	3.25	1 1/4	2 3/8*	C	D	E	F	G	H		J									
13	1-2125-13	3.49	1 1/4	2 11/32	C	D	E	F	G	H	I	J	K								
14	1-2125-14	3.74	1 1/4	2 9/16	C	D	E	F	G	H	I	J	K								
15	1-2125-15	3.98	1 1/4	2 7/8	C	D	E	F	G	H	I	J	K	L	M						
16	1-2125-16	4.22	1 1/4	3 1/16	C	D	E	F	G	H	I	J	K	L	M		O				
17	1-2125-17	4.46	1 1/4	3 1/4			E	F	G	H	I	J	K	L	M		O				
18	1-2125-18	4.70	1 1/4	3 1/2			E	F	G	H	I	J	K	L	M	N	O				
19	1-2125-19	4.95	1 1/4	3 1/2			E	F	G	H	I	J	K	L	M	N	O				
20	1-2125-20	5.19	1 1/4	3 7/8			E	F	G	H	I	J	K	L	M	N	O				
21	1-2125-21	5.43	1 1/4	4			E	F	G	H	I	J	K	L	M	N	O				
22	1-2125-22	5.67	1 1/4	4			E	F	G	H		J	K	L	M	N	O	P			
23	1-2125-23	5.91	1 1/4	4			E	F	G	H	I	J	K	L	M	N	O	P			
24	1-2125-24	6.15	1 1/4	4			E	F	G	H	I	J	K	L	M	N	O	P			
26	1-2125-26	6.63	1 1/4	4			E	F	G	H	I	J	K	L	M	N	O	P			
27	1-2125-27	6.87	1 1/4	4			E	F	G	H	I	J	K	L	M	N	O	P			
28	1-2125-28	7.11	1 1/4	4			E	F	G	H	I	J	K	L	M	N	O	P			
30	1-2125-30	7.59	1 1/4	4			E	F	G	H	I	J	K	L	M	N	O	P			
32	1-2125-32	8.07	1 1/4	4			E	F	G	H	I	J	K	L	M	N	O	P			
35	1-2125-35	8.78	1 1/4	4			E	F	G	H	I	J	K	L	M	N	O	P			

\*Has recessed groove in the hub for chain clearance. Maximum bores shown will accommodate the standard keyseat and setscrew over keyseat.