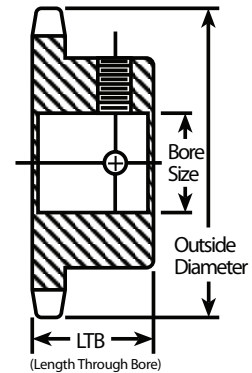


Type BS (Bored to Size) Two Setscrews at 90°

- Black Oxide Finish
- Two setscrews at 90°
- Hub sizes vary to suit different bore sizes



#25 Series Sprockets do not have Keyways, only two setscrews at 90 degrees.

25-1 FOR 1/4" PITCH ANSI CHAIN

Teeth No.	Item #	Outside Dia. (in.)	LTB (in.)	Hub Dia. (in.)	Finished Bores					
					1/4	5/16	3/8	1/2	5/8	3/4
9	1-2742-9	0.84	1/2	7/16	A					
10	1-2742-10	0.92	1/2	1/2	A					
11	1-2742-11	1.00	1/2	9/16	A	B				
12	1-2742-12	1.08	1/2	5/8	A	B	C			
13	1-2742-13	1.17	1/2	23/32	A	B	C			
14	1-2742-14	1.25	1/2	13/16	A	B	C	D		
15	1-2742-15	1.33	1/2	57/64	A	B	C	D		
16	1-2742-16	1.41	1/2	31/32	A	B	C	D		
17	1-2742-17	1.49	1/2	11/32	A	B	C	D	E	
18	1-2742-18	1.57	1/2	1 1/8	A	B	C	D	E	F
19	1-2742-19	1.65	1/2	17/32	A	B	C	D	E	F
20	1-2742-20	1.73	5/8	19/32	A	B	C	D	E	F
21	1-2742-21	1.81	5/8	13/8	A	B	C	D	E	F
22	1-2742-22	1.89	5/8	17/16	A	B	C	D	E	F
23	1-2742-23	1.97	5/8	1 1/2	A	B	C	D	E	F
24	1-2742-24	2.05	5/8	1 1/2			C	D	E	F
25	1-2742-25	2.13	5/8	1 1/2			C	D	E	F
26	1-2742-26	2.21	5/8	1 1/2			C	D	E	F
28	1-2742-28	2.37	5/8	1 1/2			C	D	E	F
30	1-2742-30	2.53	5/8	1 1/2			C	D	E	F
32	1-2742-32	2.69	5/8	1 1/2			C	D	E	F
35	1-2742-35	2.93	3/4	1 1/2			C	D	E	F
36	1-2742-36	3.01	3/4	1 1/2			C	D	E	F
40	1-2742-40	3.33	3/4	2				D	E	F
42	1-2742-42	3.49	3/4	2				D	E	F
45	1-2742-45	3.73	3/4	2				D	E	F
48	1-2742-48	3.96	3/4	2				D	E	F
54	1-2742-54	4.44	3/4	2				D	E	F
60	1-2742-60	4.92	3/4	2				D	E	F
72	1-2742-72	5.88	3/4	2				D	E	F