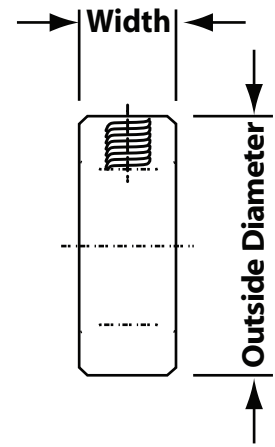
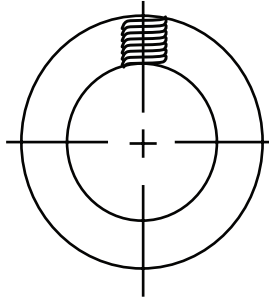


- All Solid Shaft Collars include one Setscrew installed.
- Finish is Zinc Plated.

## Round Bore



## SOLID SHAFT COLLARS

Item #	Bore	O.D.	Width	Clamp Screws
1-2766-18	3/16	7/16	1/4	#8-32 x 1/8
1-2766-25	1/4	1/2	5/16	#10-24 x 1/8
1-2766-31	5/16	5/8	5/16	#10-24 x 3/16
1-2766-37	3/8	3/4	3/8	1/4-20 x 3/16
1-2766-43	7/16	7/8	7/16	1/4-20 x 1/4
1-2766-50	1/2	1	7/16	1/4-20 x 1/4
1-2766-62	5/8	1-1/8	1/2	5/16-18 x 1/4
1-2766-75	3/4	1-1/4	9/16	5/16-18 x 1/4
1-2766-87	7/8	1-1/2	9/16	5/16-18 x 1/4
1-2766-93	15/16	1-1/2	9/16	5/16-18 x 1/4
1-2766-100	1	1-5/8	5/8	5/16-18 x 1/4
1-2766-112	1-1/8	1-3/4	5/8	5/16-18 x 1/4
1-2766-118	1-3/16	2	11/16	3/8-16 x 3/8
1-2766-125	1-1/4	2	11/16	3/8-16 x 3/8
1-2766-137	1-3/8	2-1/8	3/4	3/8-16 x 3/8
1-2766-143	1-7/16	2-1/4	3/4	3/8-16 x 3/8
1-2766-150	1-1/2	2-1/4	3/4	3/8-16 x 3/8
1-2766-162	1-5/8	2-1/2	13/16	3/8-16 x 3/8
1-2766-168	1-11/16	2-1/2	13/16	3/8-16 x 3/8
1-2766-175	1-3/4	2-3/4	7/8	1/2-13 x 1/2
1-2766-187	1-7/8	2-3/4	7/8	1/2-13 x 1/2
1-2766-193	1-15/16	3	7/8	1/2-13 x 1/2
1-2766-200	2	3	7/8	1/2-13 x 1/2