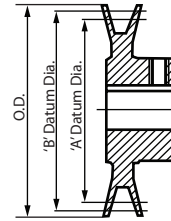


FOR 4L OR A (1/2") BELTS & 5L OR B (5/8") BELTS



### Outside and Datum Diameters

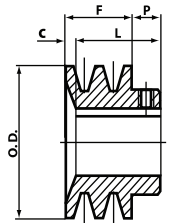
These pulleys accept both 'A' (1/2") belts or 'B' (5/8") belts. The outside diameter is measured at the outside of pulley. The datum diameters are an industry standard reference point used for calculations such as center distance and belt length. The datum system replaces the pitch system for classical belts and pulleys to compensate for differences in manufacturers construction of belts.



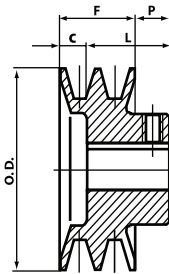
Bore Range	Keyseat
1/2"	None
5/8" to 7/8"	3/16" x 3/32"
15/16" to 1 3/8"	1/4" x 1/8"
1 7/16"	3/8" x 3/16"

## DOUBLE GROOVE SHEAVES - FINISHED BORE

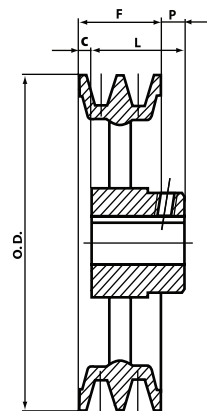
Item #	Diameters			Type	Bore Size									Dimensions			
	Outside	Datum "A"	Datum "B"		1/2"	5/8"	3/4"	7/8"	1"	1 1/8"	1 3/16"	1 3/8"	1 7/16"	F	L	P	C
1-2BK25	2.50"	1.90"	2.30"	1	A	B	C	D	-	-	-	-	-	1 3/4"	1 31/32"	15/32"	1/4"
1-2BK27	2.70"	2.10"	2.50"	1	A	B	C	D	E	-	-	-	-	1 3/4"	1 31/32"	15/32"	1/4"
1-2BK28	2.95"	2.20"	2.60"	1	A	B	C	D	E	F	-	-	-	1 3/4"	1 31/32"	15/32"	1/4"
1-2BK30	3.15"	2.40"	2.80"	1	A	B	C	D	E	F	-	-	-	1 3/4"	1 31/32"	15/32"	1/4"
1-2BK32	3.35"	2.60"	3.00"	1	-	B	-	D	E	F	-	-	-	1 3/4"	1 31/32"	15/32"	1/4"
1-2BK34	3.55"	2.80"	3.20"	1	-	B	C	D	E	F	-	-	-	1 3/4"	1 31/32"	15/32"	1/4"
1-2BK36	3.75"	3.00"	3.40"	1	-	-	C	D	E	F	-	I	-	1 3/4"	1 31/32"	15/32"	1/4"
1-2BK40	3.95"	3.20"	3.60"	2	-	B	C	D	E	F	-	-	-	1 3/4"	1 15/32"	15/32"	3/4"
1-2BK45	4.25"	3.50"	3.90"	2	-	-	-	-	E	F	-	I	-	1 3/4"	1 15/32"	15/32"	3/4"
1-2BK47	4.45"	3.70"	4.10"	2	-	-	-	D	E	F	-	-	-	1 3/4"	1 15/32"	15/32"	3/4"
1-2BK50	4.75"	4.00"	4.40"	2	-	-	C	-	E	F	-	I	-	1 3/4"	1 15/32"	15/32"	3/4"
1-2BK52	4.95"	4.20"	4.60"	2	-	-	-	D	E	F	-	I	-	1 3/4"	1 15/32"	15/32"	3/4"
1-2BK55	5.25"	4.50"	4.90"	2	-	-	-	-	F	-	I	-	-	1 3/4"	1 15/32"	15/32"	3/4"
1-2BK57	5.45"	4.70"	5.10"	2	-	-	-	-	E	F	-	I	-	1 3/4"	1 15/32"	15/32"	3/4"
1-2BK60	5.75"	5.00"	5.40"	3	-	-	C	D	E	F	-	I	-	1 3/4"	1 15/32"	15/32"	3/4"
1-2BK62	5.95"	5.20"	5.60"	3	-	-	-	-	E	F	-	I	-	1 3/4"	1 15/32"	15/32"	3/4"
1-2BK65	6.25"	5.50"	5.90"	3	-	-	-	-	E	F	-	I	-	1 3/4"	1 15/32"	15/32"	3/4"
1-2BK67	6.45"	5.70"	6.10"	3	-	-	-	-	E	F	-	I	-	1 3/4"	1 15/32"	15/32"	3/4"
1-2BK70	6.75"	6.00"	6.40"	3	-	-	C	-	E	F	G	I	J	1 3/4"	1 19/32"	11/32"	1/2"
1-2BK80	7.75"	7.00"	7.40"	3	-	-	C	-	E	F	G	I	J	1 3/4"	1 19/32"	11/32"	1/2"
1-2BK90	8.75"	8.00"	8.40"	3	-	-	C	-	E	F	G	I	J	1 3/4"	1 19/32"	11/32"	1/2"
1-2BK100	9.75"	9.00"	9.40"	3	-	-	C	-	E	-	G	I	J	1 3/4"	1 19/32"	11/32"	1/2"
1-2BK110	10.75"	10.00"	10.40"	3	-	-	-	-	E	-	G	-	J	1 3/4"	1 19/32"	11/32"	1/2"
1-2BK120	11.75"	11.00"	11.40"	3	-	-	-	-	E	-	G	-	J	1 3/4"	1 19/32"	11/32"	1/2"
1-2BK130	12.75"	12.00"	12.40"	3	-	-	-	-	E	-	G	-	J	1 3/4"	1 19/32"	11/32"	1/2"
1-2BK140	13.75"	13.00"	13.40"	3	-	-	-	-	E	-	G	-	J	1 3/4"	1 19/32"	11/32"	1/2"
1-2BK160	15.75"	15.00"	15.40"	3	-	-	-	-	E	-	G	-	J	1 3/4"	1 19/32"	11/32"	1/2"
1-2BK190	18.75"	18.00"	18.40"	3	-	-	-	-	E	-	G	-	J	1 3/4"	1 19/32"	11/32"	1/2"



TYPE 1



TYPE 2



TYPE 3