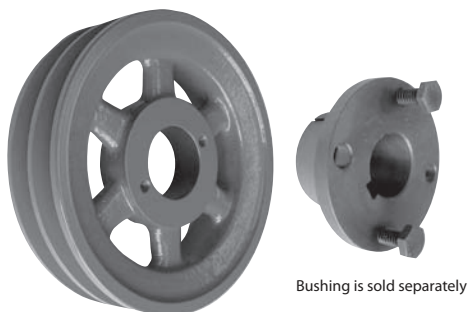


H Bushed Double Groove Pulleys

DOUBLE GROOVE H SERIES BUSHED SHEAVES

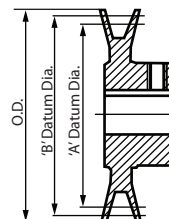
FOR 4L OR A (1/2") BELTS & 5L OR B (5/8") BELTS



Bushing is sold separately

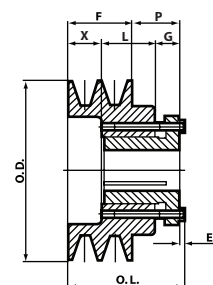
Outside and Datum Diameters

These pulleys accept both 'A' (1/2") belts or 'B' (5/8") belts. The outside diameter is measured at the outside of pulley. The datum diameters are an industry standard reference point used for calculations such as center distance and belt length. The datum system replaces the pitch system for classical belts and pulleys to compensate for differences in manufacturers construction of belts.

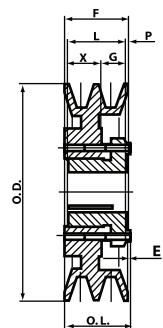


DOUBLE GROOVE H SERIES BUSHED SHEAVES

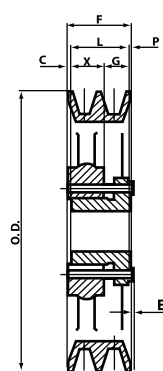
Item #	Diameters			Type	Dimensions							
	Outside	Datum "A"	Datum "B"		O.L.	F	L	P	C	X	G	E
1-2BKH32	3.35"	2.60"	3.00"	1	2 ¹³ / ₁₆ "	1 ³ / ₄ "	1 ¹ / ₄ "	7/8"	1 ⁵ / ₁₆ "	7/8"	7/16"	3/16"
1-2BKH34	3.55"	2.80"	3.20"	1	2 ¹³ / ₁₆ "	1 ³ / ₄ "	1 ¹ / ₄ "	7/8"	1 ⁵ / ₁₆ "	7/8"	7/16"	3/16"
1-2BKH36	3.75"	3.00"	3.40"	1	2 ³ / ₈ "	1 ³ / ₄ "	1 ¹ / ₄ "	7/16"	7/8"	7/8"	7/16"	3/16"
1-2BKH40	3.95"	3.20"	3.60"	1	2 ³ / ₈ "	1 ³ / ₄ "	1 ¹ / ₄ "	7/16"	7/8"	7/8"	7/16"	3/16"
1-2BKH45	4.25"	3.50"	3.90"	1	2 ³ / ₈ "	1 ³ / ₄ "	1 ¹ / ₄ "	7/16"	7/8"	7/8"	7/16"	3/16"
1-2BKH47	4.45"	3.70"	4.10"	2	1 ³ / ₄ "	1 ³ / ₄ "	1 ¹ / ₄ "	7/16"	-	7/8"	7/16"	3/16"
1-2BKH50	4.75"	4.00"	4.40"	2	1 ³ / ₄ "	1 ³ / ₄ "	1 ¹ / ₄ "	7/16"	-	7/8"	7/16"	3/16"
1-2BKH52	4.95"	4.20"	4.60"	2	1 ³ / ₄ "	1 ³ / ₄ "	1 ¹ / ₄ "	7/16"	-	7/8"	7/16"	3/16"
1-2BKH55	5.25"	4.50"	4.90"	2	1 ³ / ₄ "	1 ³ / ₄ "	1 ¹ / ₄ "	7/16"	-	7/8"	7/16"	3/16"
1-2BKH57	5.45"	4.70"	5.10"	2	1 ³ / ₄ "	1 ³ / ₄ "	1 ¹ / ₄ "	7/16"	-	7/8"	7/16"	3/16"
1-2BKH60	5.75"	5.00"	5.40"	2	1 ³ / ₄ "	1 ³ / ₄ "	1 ¹ / ₄ "	7/16"	-	7/8"	7/16"	3/16"
1-2BKH62	5.95"	5.20"	5.60"	2	1 ³ / ₄ "	1 ³ / ₄ "	1 ¹ / ₄ "	7/16"	-	7/8"	7/16"	3/16"
1-2BKH65	6.25"	5.50"	5.90"	3	1 ³ / ₄ "	1 ³ / ₄ "	1 ¹ / ₄ "	7/16"	1/4"	7/8"	7/16"	3/16"
1-2BKH67	6.45"	5.70"	6.10"	3	1 ³ / ₄ "	1 ³ / ₄ "	1 ¹ / ₄ "	7/16"	1/4"	7/8"	7/16"	3/16"
1-2BKH70	6.75"	6.00"	6.40"	3	1 ³ / ₄ "	1 ³ / ₄ "	1 ¹ / ₄ "	7/16"	1/4"	7/8"	7/16"	3/16"
1-2BKH80	7.75"	7.00"	7.40"	3	1 ³ / ₄ "	1 ³ / ₄ "	1 ¹ / ₄ "	7/16"	1/4"	7/8"	7/16"	3/16"
1-2BKH90	8.75"	8.00"	8.40"	3	1 ³ / ₄ "	1 ³ / ₄ "	1 ¹ / ₄ "	7/16"	1/4"	7/8"	7/16"	3/16"
1-2BKH100	9.75"	9.00"	9.40"	3	1 ³ / ₄ "	1 ³ / ₄ "	1 ¹ / ₄ "	7/16"	1/4"	7/8"	7/16"	3/16"
1-2BKH110	10.75"	10.00"	10.40"	3	1 ³ / ₄ "	1 ³ / ₄ "	1 ¹ / ₄ "	7/16"	1/4"	7/8"	7/16"	3/16"
1-2BKH120	11.75"	11.00"	11.40"	3	1 ³ / ₄ "	1 ³ / ₄ "	1 ¹ / ₄ "	7/16"	1/4"	7/8"	7/16"	3/16"
1-2BKH130	12.75"	12.00"	12.40"	3	1 ³ / ₄ "	1 ³ / ₄ "	1 ¹ / ₄ "	7/16"	1/4"	7/8"	7/16"	3/16"
1-2BKH140	13.75"	13.00"	13.40"	3	1 ³ / ₄ "	1 ³ / ₄ "	1 ¹ / ₄ "	7/16"	1/4"	7/8"	7/16"	3/16"
1-2BKH160	15.75"	15.00"	15.40"	3	1 ³ / ₄ "	1 ³ / ₄ "	1 ¹ / ₄ "	7/16"	1/4"	7/8"	7/16"	3/16"
1-2BKH190	18.75"	18.00"	18.40"	3	1 ³ / ₄ "	1 ³ / ₄ "	1 ¹ / ₄ "	7/16"	1/4"	7/8"	7/16"	3/16"



TYPE 1



TYPE 2



TYPE 3