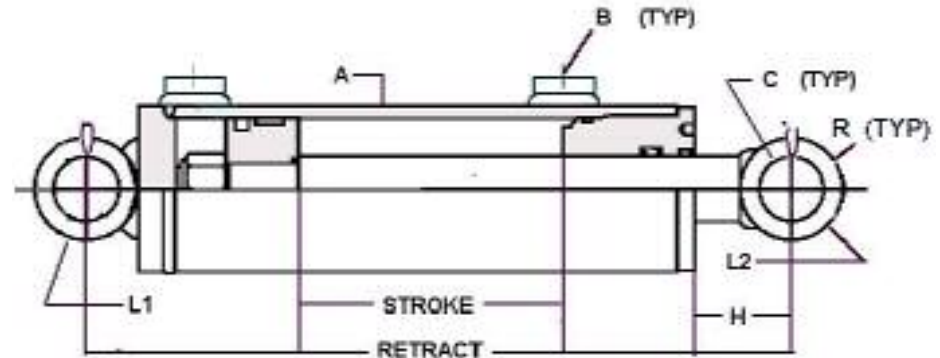


**Prince**

**THE FORTRESS LINE  
4 1/2" Bore Heavy Duty Welded  
Cylinders**



Surplus Center Item No	Model No.	Style	Wt.	PSI	Column Load (Lbs)	Ret	Rod Dia.	A	B	C	R	H	L 1	L 2
9-5113-08	SAE-64508	4 1/2 X 8	54	3000	FULL PSI	17	2 1/4	1/4	#10 SAE	1.265	1	2 1/4	5 1/4	3 1/4
9-5113-12	SAE-64512	4 1/2 X 12	62	3000	FULL PSI	21	2 1/4	1/4	#10 SAE	1.265	1	2 1/4	5 1/4	3 1/4
9-5113-16	SAE-64516	4 1/2 X 16	71	3000	FULL PSI	25	2 1/4	1/4	#10 SAE	1.265	1	2 1/4	5 1/4	3 1/4
9-5113-20	SAE-64520	4 1/2 X 20	80	3000	FULL PSI	29	2 1/4	1/4	#10 SAE	1.265	1	2 1/4	5 1/4	3 1/4
9-5113-24	SAE-64524	4 1/2 X 24	89	3000	FULL PSI	33	2 1/4	1/4	#10 SAE	1.265	1	2 1/4	5 1/4	3 1/4
9-5113-30	SAE-64530	4 1/2 X 30	104	3000	FULL PSI	39	2 1/4	1/4	#10 SAE	1.265	1	2 1/4	5 1/4	3 1/4
9-5113-32	SAE-64532	4 1/2 X 32	106	3000	FULL PSI	41	2 1/4	1/4	#10 SAE	1.265	1	2 1/4	5 1/4	3 1/4
9-5113-36	SAE-64536	4 1/2 X 36	115	3000	48,860 LBS	45	2 1/4	1/4	#10 SAE	1.265	1	2 1/4	5 1/4	3 1/4
9-5113-40	SAE-64540	4 1/2 X 40	124	3000	38,650 LBS	49	2 1/4	1/4	#10 SAE	1.265	1	2 1/4	5 1/4	3 1/4
9-5113-42	SAE-64542	4 1/2 X 42	128	3000	35,330 LBS	51	2 1/4	1/4	#10 SAE	1.265	1	2 1/4	5 1/4	3 1/4
9-5113-48	SAE-64548*	4 1/2 X 48	147	3000	26,690 LBS	59	2 1/4	1/4	#10 SAE	1.265	1	2 1/4	5 1/4	3 1/4
9-5113-60	SAE-64560*	4 1/2 X 60	177	3000	17,210 LBS	73	2 1/4	1/4	#10 SAE	1.265	1	2 1/4	5 1/4	3 1/4

Surplus Center <http://www.surpluscenter.com/> 1-800/488-3407