

## DESCRIPTION

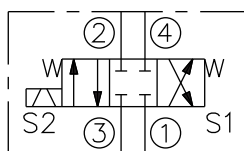
A solenoid-operated, 4-way, 3-position, direct-acting, spool-type, closed center, screw-in hydraulic cartridge valve.

## OPERATION

When de-energized, the **SV10-47C** blocks flow to all ports. When coil #1 is energized, flow is allowed from ③ to ④, and from ② to ①. When coil #2 is energized, flow is allowed from ③ to ②, and from ④ to ①.

In circuits where work port flows are unequal due to cylinder ratios, the higher return flow should be directed to port ②.

**While ① may be fully pressurized, it is not intended for use as the valve's inlet.**



**Important:**  
**Do not overtorque.**

**A good ground connection is required for the valve to function properly.**

